

Histone H3K36me1 (Mono-methyl Lys36) antibody - ChIP grade

Cat. No. GTX60354

Host	Rabbit
Clonality	Polyclonal
Isotype	IgG
Application	WB, ICC/IF, Dot, ELISA, ChIP assay
Reactivity	Human

Package
50 µg

APPLICATION

Application Note

*Optimal dilutions/concentrations should be determined by the researcher.

Suggested dilution	Recommended dilution
WB	1:1,000
ICC/IF	1:500
Dot	1:20,000
ELISA	1:100
ChIP assay	5 µg

Not tested in other applications.

PROPERTIES

Form	Liquid
Buffer	PBS
Preservative	0.05% Sodium azide, 0.05% ProClin 300
Storage	Store as concentrated solution. Centrifuge briefly prior to opening vial. For short-term storage (1-2 weeks), store at 4°C. For long-term storage, aliquot and store at -20°C or below. Avoid multiple freeze-thaw cycles.
Concentration	0.94 mg/ml (Please refer to the vial label for the specific concentration.)
Immunogen	Histone H3 containing the monomethylated lysine 36 (H3K36me1), using a KLH-conjugated synthetic peptide.
Purification	Purified by affinity chromatography
Conjugation	Unconjugated

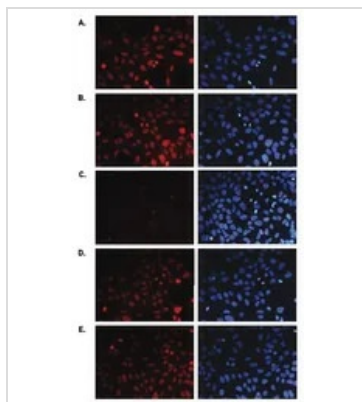
Note

For laboratory research use only. Not for any clinical, therapeutic, or diagnostic use in humans or animals. Not for animal or human consumption.

Purchasers shall not, and agree not to enable third parties to, analyze, copy, reverse engineer or otherwise attempt to determine the structure or sequence of the product.



For full product information, images and publications, please visit our [website](#).

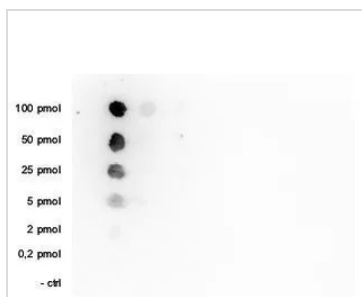
DATA IMAGES

GTx60354 ICC/IF Image

ICC/IF analysis of 4% paraformaldehyde fixed U2OS cells using GTX60354 Histone H3K36me1 (Mono-methyl Lys36) antibody - ChIP grade. Staining of the cells with the H3K36me1 antibody after incubation of the antibody with 2 ng/ μ l blocking peptide containing the unmodified and the mono-, di- and trimethylated H3K36 (Figure B, C, D, respectively).

Red : Primary antibody

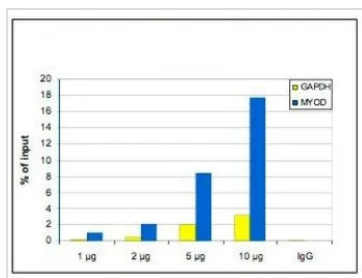
Blue : DAPI

Dilution : 1:500

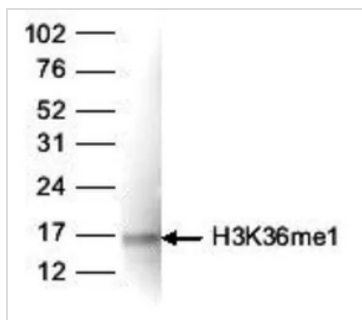

GTx60354 Dot Image

Dot blot analysis of 0.2 - 100 pmol of the peptides containing other modifications of histone H3 or the unmodified H3K36 using GTX60354 Histone H3K36me1 (Mono-methyl Lys36) antibody - ChIP grade.

Dilution : 1:20,000


GTx60354 ChIP assay Image

ChIP analysis of sheared chromatin from 1.5×10^6 U2OS cells using GTX60354 Histone H3K36me1 (Mono-methyl Lys36) antibody - ChIP grade. A titration consisting of 1, 2, 5 and 10 μ g of antibody per ChIP experiment was analyzed. IgG (1 μ g/IP) was used as a negative IP control. Quantitative PCR was performed with primers for the promoter of the constitutively expressed GAPDH gene and for the inactive gene MYOD. This figure shows the recovery, expressed as a % of input (the relative amount of immunoprecipitated DNA compared to input DNA after qPCR analysis).


GTx60354 WB Image

WB analysis of histone extracts (15 μ g) from HeLa cells using GTX60354 Histone H3K36me1 (Mono-methyl Lys36) antibody - ChIP grade.

Dilution : 1:1,000



For full product information, images and publications, please visit our [website](https://www.genetex.com).