

## Histone H3K9me1 (Mono-methyl Lys9) antibody - ChIP grade

**Cat. No. GTX60356**

<b>Host</b>	Rabbit
<b>Clonality</b>	Polyclonal
<b>Isotype</b>	IgG
<b>Applications</b>	WB, ICC/IF, Dot, ELISA, ChIP assay
<b>Reactivity</b>	Human

Package  
50 µl

## Applications

**Application Note**

\*Optimal dilutions/concentrations should be determined by the researcher.

Suggested dilution	Recommended dilution
WB	1:1,000
ICC/IF	1:200
Dot	1:200,000
ELISA	1:2,000 - 1:3,000
ChIP assay	10 µl

Not tested in other applications.

## Properties

<b>Form</b>	Liquid
<b>Buffer</b>	Serum
<b>Preservative</b>	0.05% Sodium azide
<b>Storage</b>	Store as concentrated solution. Centrifuge briefly prior to opening vial. For short-term storage (1-2 weeks), store at 4°C. For long-term storage, aliquot and store at -20°C or below. Avoid multiple freeze-thaw cycles.
<b>Immunogen</b>	Histone H3 containing the monomethylated lysine 9 (H3K9me1), using a KLH-conjugated synthetic peptide.
<b>Purification</b>	Unpurified
<b>Conjugation</b>	Unconjugated

**Note**

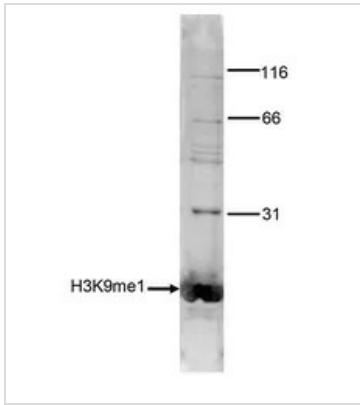
For laboratory research use only. Not for any clinical, therapeutic, or diagnostic use in humans or animals. Not for animal or human consumption.

Purchasers shall not, and agree not to enable third parties to, analyze, copy, reverse engineer or otherwise attempt to determine the structure or sequence of the product.



For full product information, images and publications, please visit our [website](#).

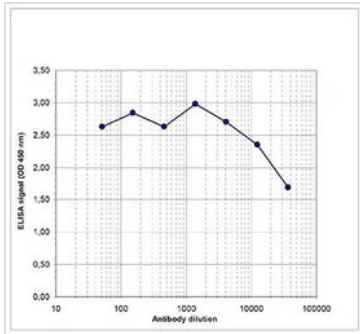
DATA IMAGES



**GTX60356 WB Image**

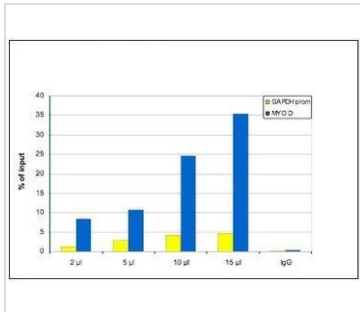
WB analysis of histone extracts (15 µg) from HeLa cells using GTX60356 Histone H3K9me1 (Mono-methyl Lys9) antibody - ChIP grade.

Dilution : 1:1000



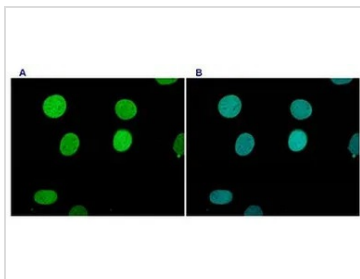
**GTX60356 ELISA Image**

ELISA analysis of peptide containing the histone modification of interest using GTX60356 Histone H3K9me1 (Mono-methyl Lys9) antibody - ChIP grade.



**GTX60356 ChIP assay Image**

ChIP analysis of sheared chromatin from  $1.6 \times 10^6$  U2OS cells using GTX60356 Histone H3K9me1 (Mono-methyl Lys9) antibody - ChIP grade. A titration of the antibody consisting of 2, 5, 10 and 15 µl per ChIP experiment was analysed. IgG (5 µg/IP) was used as negative IP control. Quantitative PCR was performed using primers for the promoter of the housekeeping gene GAPDH and for the coding region of the myogenic differentiation gene (MYOD), a gene that is inactive at normal conditions. This figure shows the recovery, expressed as a % of input (the relative amount of immunoprecipitated DNA compared to input DNA after qPCR analysis).



**GTX60356 ICC/IF Image**

ICC/IF analysis of paraformaldehyde fixed HeLa cells using GTX60356 Histone H3K9me1 (Mono-methyl Lys9) antibody - ChIP grade.

Green : Primary antibody

Blue : DAPI

Dilution : 1:200



For full product information, images and publications, please visit our [website](#).