

MECP2 antibody - ChIP grade

Cat. No. GTX60358

Host	Rabbit
Clonality	Polyclonal
Isotype	IgG
Applications	WB, ELISA, ChIP assay
Reactivity	Human

References (2)

Package

50 µg

Applications

Application Note

*Optimal dilutions/concentrations should be determined by the researcher.

Suggested dilution	Recommended dilution
WB	1:1,000
ELISA	1:1,000
ChIP assay	1-5 µg

Not tested in other applications.

Calculated MW 52 kDa. ([Note](#))

Properties

Form	Liquid
Buffer	PBS
Preservative	0.05% Sodium azide, 0.05% ProClin 300
Storage	Store as concentrated solution. Centrifuge briefly prior to opening vial. For short-term storage (1-2 weeks), store at 4°C. For long-term storage, aliquot and store at -20°C or below. Avoid multiple freeze-thaw cycles.
Concentration	1.2 mg/ml (Please refer to the vial label for the specific concentration.)
Immunogen	MeCP2 (Methyl-CpG-binding domain protein 2), using a KLH-conjugated synthetic peptide containing a sequence from the C-terminal part of the protein.
Purification	Purified by affinity chromatography
Conjugation	Unconjugated

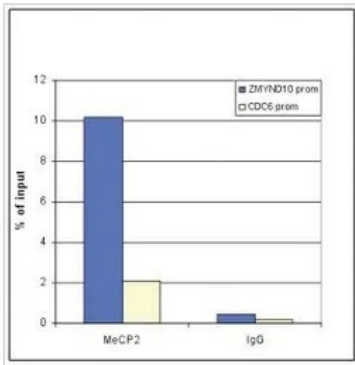
Note

For laboratory research use only. Not for any clinical, therapeutic, or diagnostic use in humans or animals. Not for animal or human consumption.

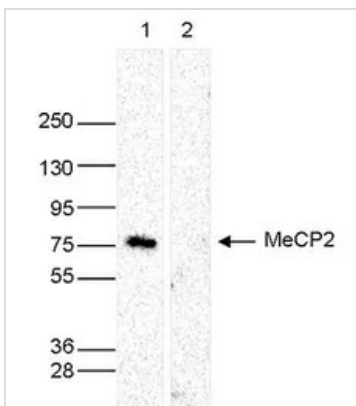
Purchasers shall not, and agree not to enable third parties to, analyze, copy, reverse engineer or otherwise attempt to determine the structure or sequence of the product.



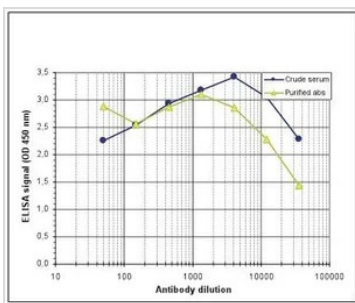
For full product information, images and publications, please visit our [website](#).

DATA IMAGES

GTX60358 ChIP assay Image

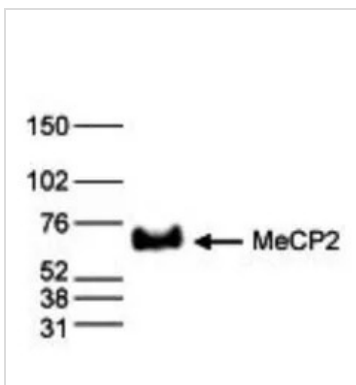
ChIP analysis of sheared chromatin from 10^6 U2OS cells using GTX60358 MECP2 antibody - ChIP grade. IgG (1 μ g/IP) was used as a negative IP control. Quantitative PCR was performed with primers for the promoters of the ZMYND10 gene (used as a positive control) and CDC6 gene (used as a negative control). This figure shows the recovery, expressed as a % of input (the relative amount of immunoprecipitated DNA compared to input DNA after qPCR analysis).


GTX60358 WB Image

WB analysis of whole cell extracts (40 μ g) from HeLa cells transfected with MeCP2 siRNA (lane 2) and from an untransfected control (lane 1) using GTX60358 MECP2 antibody - ChIP grade.
Dilution : 1:1,000


GTX60358 ELISA Image

ELISA analysis of peptides used for immunization using GTX60358 MECP2 antibody - ChIP grade.


GTX60358 WB Image

WB analysis of nuclear extracts (25 μ g) from HeLa cells using GTX60358 MECP2 antibody - ChIP grade.
Dilution : 1:1,000



For full product information, images and publications, please visit our [website](http://www.genetex.com).