

MBD1 antibody - ChIP grade

Cat. No. GTX60359

Host	Rabbit
Clonality	Polyclonal
Isotype	IgG
Applications	WB, ELISA, ChIP assay
Reactivity	Human, Mouse

Package

50 µg

Applications

Application Note

*Optimal dilutions/concentrations should be determined by the researcher.

Suggested dilution	Recommended dilution
WB	1:500
ELISA	1:1,000
ChIP assay	1-5 µg

Not tested in other applications.

Calculated MW 67 kDa. ([Note](#))

Properties

Form	Liquid
Buffer	PBS
Preservative	0.05% Sodium azide, 0.05% ProClin 300
Storage	Store as concentrated solution. Centrifuge briefly prior to opening vial. For short-term storage (1-2 weeks), store at 4°C. For long-term storage, aliquot and store at -20°C or below. Avoid multiple freeze-thaw cycles.
Concentration	0.7 mg/ml (Please refer to the vial label for the specific concentration.)
Immunogen	Human MBD1 (Methyl-CpG-binding domain protein 1), using a KLH-conjugated synthetic peptide containing a sequence from the N-terminal part of the protein.
Purification	Purified by affinity chromatography
Conjugation	Unconjugated

Note

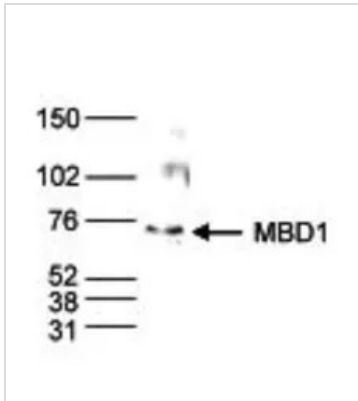
For laboratory research use only. Not for any clinical, therapeutic, or diagnostic use in humans or animals. Not for animal or human consumption.

Purchasers shall not, and agree not to enable third parties to, analyze, copy, reverse engineer or otherwise attempt to determine the structure or sequence of the product.



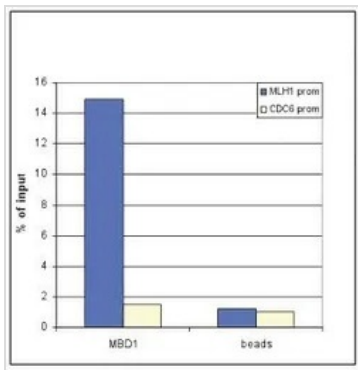
For full product information, images and publications, please visit our [website](#).

DATA IMAGES



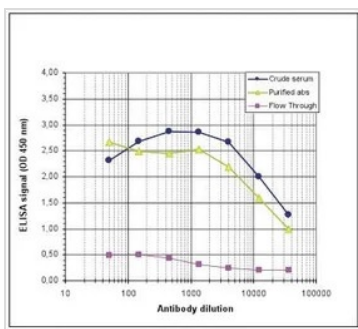
GTX60359 WB Image

WB analysis of nuclear extracts (40 µg) from HeLa cells using GTX60359 MBD1 antibody - ChIP grade.
Dilution : 1:500



GTX60359 ChIP assay Image

ChIP analysis of sheared chromatin from 10^6 U2OS cells using GTX60359 MBD1 antibody - ChIP grade. Beads only were used as a negative IP control. Quantitative PCR was performed with primers for the promoters of the MLH1 gene (used as a positive control) and CDC6 gene (used as a negative control). This figure shows the recovery, expressed as a % of input (the relative amount of immunoprecipitated DNA compared to input DNA after qPCR analysis).



GTX60359 ELISA Image

ELISA analysis of peptides used for immunization using GTX60359 MBD1 antibody - ChIP grade.



For full product information, images and publications, please visit our [website](http://www.genetex.com).