

## MBD1 antibody - ChIP grade

**Cat. No. GTX60359**

<b>Host</b>	Rabbit
<b>Clonality</b>	Polyclonal
<b>Isotype</b>	IgG
<b>Applications</b>	WB, ELISA, ChIP assay
<b>Reactivity</b>	Human, Mouse

**Package**  
50 µg

## Applications

**Application Note**

\*Optimal dilutions/concentrations should be determined by the researcher.

Suggested dilution	Recommended dilution
WB	1:500
ELISA	1:1,000
ChIP assay	1-5 µg

Not tested in other applications.

**Calculated MW** 67 kDa. ([Note](#))

## Properties

<b>Form</b>	Liquid
<b>Buffer</b>	PBS
<b>Preservative</b>	0.05% Sodium azide, 0.05% ProClin 300
<b>Storage</b>	Store as concentrated solution. Centrifuge briefly prior to opening vial. For short-term storage (1-2 weeks), store at 4°C. For long-term storage, aliquot and store at -20°C or below. Avoid multiple freeze-thaw cycles.
<b>Concentration</b>	0.7 mg/ml (Please refer to the vial label for the specific concentration.)
<b>Immunogen</b>	Human MBD1 (Methyl-CpG-binding domain protein 1), using a KLH-conjugated synthetic peptide containing a sequence from the N-terminal part of the protein.
<b>Purification</b>	Purified by affinity chromatography
<b>Conjugation</b>	Unconjugated

**Note**

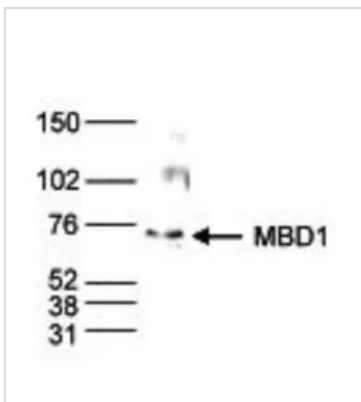
For laboratory research use only. Not for any clinical, therapeutic, or diagnostic use in humans or animals. Not for animal or human consumption.

Purchasers shall not, and agree not to enable third parties to, analyze, copy, reverse engineer or otherwise attempt to determine the structure or sequence of the product.



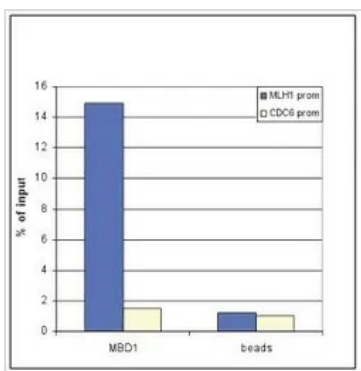
For full product information, images and publications, please visit our [website](#).

DATA IMAGES



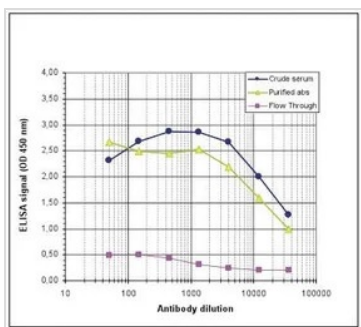
**GTX60359 WB Image**

WB analysis of nuclear extracts (40 µg) from HeLa cells using GTX60359 MBD1 antibody - ChIP grade.  
Dilution : 1:500



**GTX60359 ChIP assay Image**

ChIP analysis of sheared chromatin from 10<sup>6</sup> U2OS cells using GTX60359 MBD1 antibody - ChIP grade. Beads only were used as a negative IP control. Quantitative PCR was performed with primers for the promoters of the MLH1 gene (used as a positive control) and CDC6 gene (used as a negative control). This figure shows the recovery, expressed as a % of input (the relative amount of immunoprecipitated DNA compared to input DNA after qPCR analysis).



**GTX60359 ELISA Image**

ELISA analysis of peptides used for immunization using GTX60359 MBD1 antibody - ChIP grade.



For full product information, images and publications, please visit our [website](#).