

LSD1 antibody - ChIP grade

Cat. No. GTX60362

Host	Rabbit
Clonality	Polyclonal
Isotype	IgG
Applications	WB, ChIP assay
Reactivity	Human

Package
50 µg

Applications

Application Note

*Optimal dilutions/concentrations should be determined by the researcher.

Suggested dilution	Recommended dilution
WB	1:1,000
ChIP assay	3 µg

Not tested in other applications.

Calculated MW 93 kDa. ([Note](#))

Properties

Form	Liquid
Buffer	PBS
Preservative	0.05% Sodium azide, 0.05% ProClin 300
Storage	Store as concentrated solution. Centrifuge briefly prior to opening vial. For short-term storage (1-2 weeks), store at 4°C. For long-term storage, aliquot and store at -20°C or below. Avoid multiple freeze-thaw cycles.
Concentration	2 mg/ml (Please refer to the vial label for the specific concentration.)
Immunogen	Human LSD1 (Lysine-specific demethylase 1), using the full length recombinant protein.
Purification	Protein G purified
Conjugation	Unconjugated

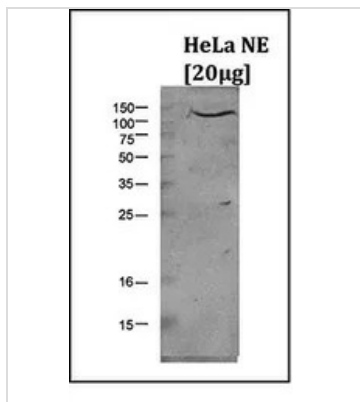
Note

For laboratory research use only. Not for any clinical, therapeutic, or diagnostic use in humans or animals. Not for animal or human consumption.

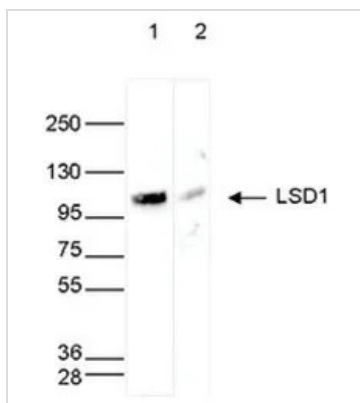
Purchasers shall not, and agree not to enable third parties to, analyze, copy, reverse engineer or otherwise attempt to determine the structure or sequence of the product.



For full product information, images and publications, please visit our [website](#).

DATA IMAGES

GTx60362 WB Image

WB analysis of nuclear extracts (20 µg) from HeLa cells using GTx60362 LSD1 antibody - ChIP grade.
Dilution : 1:1,000


GTx60362 WB Image

WB analysis of whole cell extracts (40 µg) from HeLa cells transfected with LSD1 siRNA (lane 2) and from an untransfected control (lane 1) using GTx60362 LSD1 antibody - ChIP grade.
Dilution : 1:1,000



For full product information, images and publications, please visit our [website](https://www.genetex.com).