

SUZ12 antibody - ChIP grade

Cat. No. GTX60363

Host	Rabbit
Clonality	Polyclonal
Isotype	IgG
Applications	WB, ChIP assay
Reactivity	Human, Mouse

Package
50 µg

Applications

Application Note

*Optimal dilutions/concentrations should be determined by the researcher.

Suggested dilution	Recommended dilution
WB	Assay dependent
ChIP assay	Assay dependent

Not tested in other applications.

Calculated MW 83 kDa. ([Note](#))

Properties

Form	Liquid
Buffer	PBS
Preservative	0.05% Sodium azide, 0.05% ProClin 300
Storage	Store as concentrated solution. Centrifuge briefly prior to opening vial. For short-term storage (1-2 weeks), store at 4°C. For long-term storage, aliquot and store at -20°C or below. Avoid multiple freeze-thaw cycles.
Concentration	2 mg/ml (Please refer to the vial label for the specific concentration.)
Purification	Protein G purified
Conjugation	Unconjugated

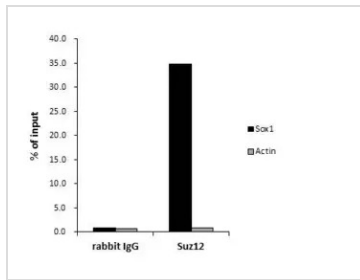
Note

For laboratory research use only. Not for any clinical, therapeutic, or diagnostic use in humans or animals. Not for animal or human consumption.

Purchasers shall not, and agree not to enable third parties to, analyze, copy, reverse engineer or otherwise attempt to determine the structure or sequence of the product.



For full product information, images and publications, please visit our [website](#).

DATA IMAGES

GTX60363 ChIP assay Image

ChIP was performed with mouse ESCs nuclear extract and either 10 µg of SUZ12 antibody or control rabbit IgG. The precipitated DNA was detected by QPCR with primer set targeting to Sox1 promoter or Actin.



For full product information, images and publications, please visit our [website](#).