

# Histone H4K20me3 (trimethyl Lys20) antibody [GT9009]

**Cat. No. GTX60364**

<b>Host</b>	Mouse
<b>Clonality</b>	Monoclonal
<b>Isotype</b>	IgG
<b>Application</b>	WB, ICC/IF, ChIP assay
<b>Reactivity</b>	Human, Zebrafish

**Package**

50 µl

## APPLICATION

### Application Note

\*Optimal dilutions/concentrations should be determined by the researcher.

Suggested dilution	Recommended dilution
WB	1:50
ICC/IF	1:200
ChIP assay	3 µl

Not tested in other applications.

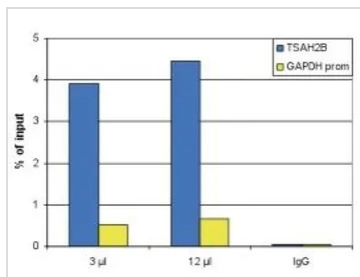
## PROPERTIES

<b>Form</b>	Liquid
<b>Buffer</b>	Tissue culture supernatant
<b>Preservative</b>	0.05% Sodium azide
<b>Storage</b>	Store as concentrated solution. Centrifuge briefly prior to opening vial. For short-term storage (1-2 weeks), store at 4°C. For long-term storage, aliquot and store at -20°C or below. Avoid multiple freeze-thaw cycles.
<b>Immunogen</b>	Histone H4 containing the trimethylated lysine 20 (H4K20me3), using a KLH-conjugated synthetic peptide.
<b>Purification</b>	Unpurified
<b>Conjugation</b>	Unconjugated
<b>Note</b>	For laboratory research use only. Not for any clinical, therapeutic, or diagnostic use in humans or animals. Not for animal or human consumption.  Purchasers shall not, and agree not to enable third parties to, analyze, copy, reverse engineer or otherwise attempt to determine the structure or sequence of the product.



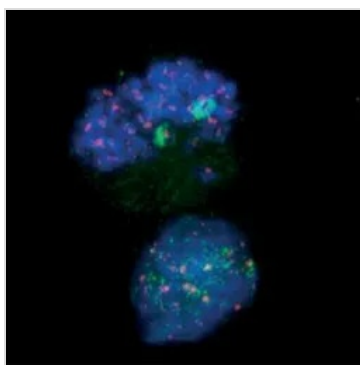
For full product information, images and publications, please visit our [website](#).

## DATA IMAGES



### GTX60364 ChIP assay Image

ChIP analysis of sheared chromatin from  $10^4$  HeLa cells using GTX60364 Histone H4K20me3 (trimethyl Lys20) antibody [GT9009]. Two different quantities of antibody (3 and 12 µl per ChIP experiment) were analysed. IgG (1 µg/IP) was used as negative IP control. QPCR was performed with primers for the GAPDH promoter and for the inactive gene TSH2B. This figure shows the recovery, expressed as a % of input (the relative amount of immunoprecipitated DNA compared to input DNA after qPCR analysis).



### GTX60364 ICC/IF Image

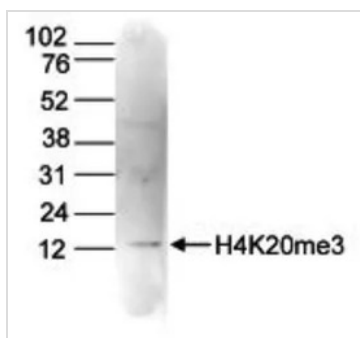
ICC/IF analysis of 4% paraformaldehyde fixed HEK293T cells using GTX60364 Histone H4K20me3 (trimethyl Lys20) antibody [GT9009].

Green : Primary antibody

Pink : CREST antibody

Blue : DAPI

Dilution : 1:200



### GTX60364 WB Image

WB analysis of histone extracts (15 µg) from HeLa cells using GTX60364 Histone H4K20me3 (trimethyl Lys20) antibody [GT9009].

Dilution : 1:50



For full product information, images and publications, please visit our [website](https://www.genetex.com).