

RFXAP antibody - ChIP grade

Cat. No. GTX60368

Host	Rabbit
Clonality	Polyclonal
Isotype	IgG
Applications	ChIP assay
Reactivity	Human

Package
50 µg

Applications

Application Note

*Optimal dilutions/concentrations should be determined by the researcher.

Suggested dilution	Recommended dilution
ChIP assay	1-10 µg

Not tested in other applications.

Properties

Form	Liquid
Buffer	PBS
Preservative	0.05% Sodium azide, 0.05% ProClin 300
Storage	Store as concentrated solution. Centrifuge briefly prior to opening vial. For short-term storage (1-2 weeks), store at 4°C. For long-term storage, aliquot and store at -20°C or below. Avoid multiple freeze-thaw cycles.
Concentration	1 mg/ml (Please refer to the vial label for the specific concentration.)
Immunogen	RFXAP (Regulatory factor X-associated protein), using the recombinant protein.
Purification	Purified by affinity chromatography
Conjugation	Unconjugated

Note

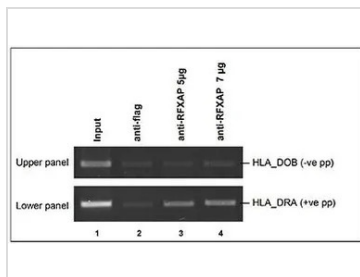
For laboratory research use only. Not for any clinical, therapeutic, or diagnostic use in humans or animals. Not for animal or human consumption.

Purchasers shall not, and agree not to enable third parties to, analyze, copy, reverse engineer or otherwise attempt to determine the structure or sequence of the product.



For full product information, images and publications, please visit our [website](#).

DATA IMAGES



GTX60368 ChIP assay Image

ChIP analysis of sheared chromatin from 2×10^6 NALM cells using GTX60368 RFXAP antibody - ChIP grade. An anti-flag antibody (lane 2) was used as negative IP control. This figure shows the result of the end-point PCR with primers for HLA_DRA, used as positive control (lower panel) and for HLA_DOB, used a negative PCR control (upper panel).

Antibody amount : 5-7 μ g



For full product information, images and publications, please visit our [website](#).