

# Histone H3K36me2 (Di-methyl Lys36) antibody - ChIP grade

**Cat. No. GTX60372**

<b>Host</b>	Rabbit
<b>Clonality</b>	Polyclonal
<b>Isotype</b>	IgG
<b>Application</b>	WB, ICC/IF, Dot, ELISA, ChIP assay
<b>Reactivity</b>	Human, Mouse, Yeast

**Package**

50 µl

## APPLICATION

### Application Note

\*Optimal dilutions/concentrations should be determined by the researcher.

Suggested dilution	Recommended dilution
WB	1:1,000
ICC/IF	1:500
Dot	1:100,000
ELISA	1:1,000
ChIP assay	0.5-10 µl

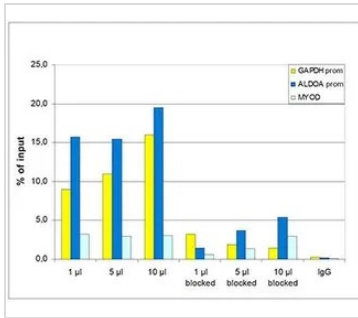
Not tested in other applications.

## PROPERTIES

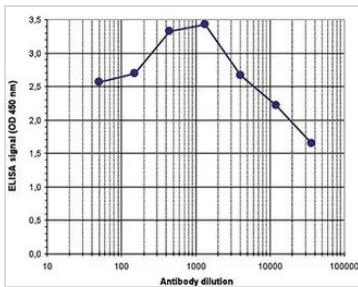
<b>Form</b>	Liquid
<b>Buffer</b>	Serum
<b>Preservative</b>	0.05% Sodium azide
<b>Storage</b>	Store as concentrated solution. Centrifuge briefly prior to opening vial. For short-term storage (1-2 weeks), store at 4°C. For long-term storage, aliquot and store at -20°C or below. Avoid multiple freeze-thaw cycles.
<b>Immunogen</b>	Histone H3 containing the dimethylated lysine 36 (H3K36me2), using a KLH-conjugated synthetic peptide.
<b>Purification</b>	Unpurified
<b>Conjugation</b>	Unconjugated
<b>Note</b>	For laboratory research use only. Not for any clinical, therapeutic, or diagnostic use in humans or animals. Not for animal or human consumption.  Purchasers shall not, and agree not to enable third parties to, analyze, copy, reverse engineer or otherwise attempt to determine the structure or sequence of the product.



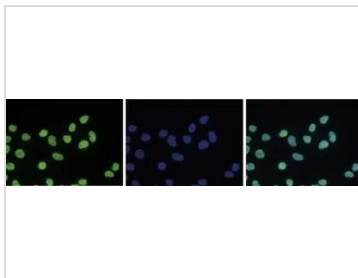
For full product information, images and publications, please visit our [website](#).

**DATA IMAGES**

**GTX60372 ChIP assay Image**

ChIP analysis of sheared chromatin from  $10^4$  HeLa cells using GTX60372 Histone H3K36me2 (Di-methyl Lys36) antibody - ChIP grade. A titration of the antibody consisting of 1, 5, and 10  $\mu$ l per ChIP experiment was analysed. Additionally, the same titration was analysed after incubation of the antibody with 5 nmol blocking peptide for 1 hour at room temperature. IgG (5  $\mu$ g/IP) was used as negative IP control. QPCR was performed with primers for the promoter of the active genes GAPDH and ALDOA and for the coding region of the myogenic differentiation gene (MYOD). This figure shows the recovery, expressed as a % of input (the relative amount of immunoprecipitated DNA compared to input DNA after qPCR analysis).


**GTX60372 ELISA Image**

ELISA analysis of peptide containing the histone modification of interest using GTX60372 Histone H3K36me2 (Di-methyl Lys36) antibody - ChIP grade.

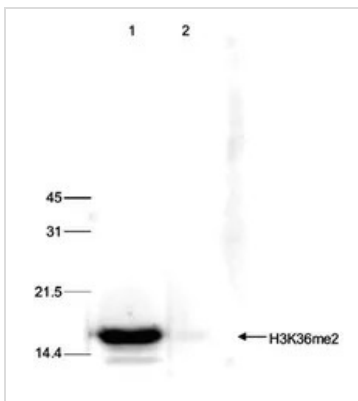

**GTX60372 ICC/IF Image**

ICC/IF analysis of 4% paraformaldehyde fixed HeLa cells using GTX60372 Histone H3K36me2 (Di-methyl Lys36) antibody - ChIP grade.

Green : Primary antibody

Blue : DAPI

Dilution : 1:500


**GTX60372 WB Image**

WB analysis of histone extracts (15  $\mu$ g) from HeLa cells using GTX60372 Histone H3K36me2 (Di-methyl Lys36) antibody - ChIP grade.

Dilution : 1:1,000



For full product information, images and publications, please visit our [website](https://www.genetex.com).