

# Pyruvate dehydrogenase kinase 1 / PDK1 antibody [4A11]

**Cat. No. GTX60386**

<b>Host</b>	Mouse
<b>Clonality</b>	Monoclonal
<b>Isotype</b>	IgG1
<b>Applications</b>	WB, ICC/IF, IHC-P, FCM, ELISA
<b>Reactivity</b>	Human, Mouse, Rat, Monkey

References ( 1 )

Package

100 µl

## Applications

### Application Note

\*Optimal dilutions/concentrations should be determined by the researcher.

Suggested dilution	Recommended dilution
WB	1/500 - 1/2000
ICC/IF	1/200 - 1/1000
IHC-P	1/200 - 1/1000
FCM	1/200 - 1/400
ELISA	1/10000

Not tested in other applications.

**Calculated MW** 49 kDa. ( [Note](#) )

## Properties

<b>Form</b>	Liquid
<b>Buffer</b>	Ascites
<b>Preservative</b>	0.03% Sodium azide
<b>Storage</b>	Store as concentrated solution. Centrifuge briefly prior to opening vial. For short-term storage (1-2 weeks), store at 4°C. For long-term storage, aliquot and store at -20°C or below. Avoid multiple freeze-thaw cycles.
<b>Immunogen</b>	Purified recombinant fragment of human PDK1 expressed in E. Coli.
<b>Purification</b>	Unpurified
<b>Conjugation</b>	Unconjugated

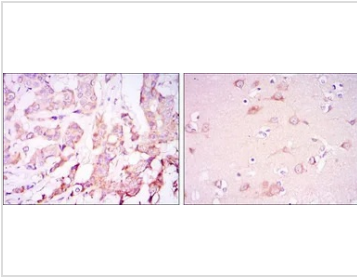
### Note

For laboratory research use only. Not for any clinical, therapeutic, or diagnostic use in humans or animals. Not for animal or human consumption.

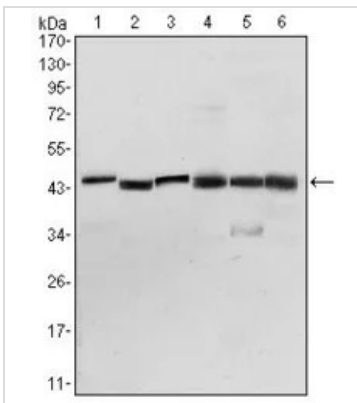
Purchasers shall not, and agree not to enable third parties to, analyze, copy, reverse engineer or otherwise attempt to determine the structure or sequence of the product.



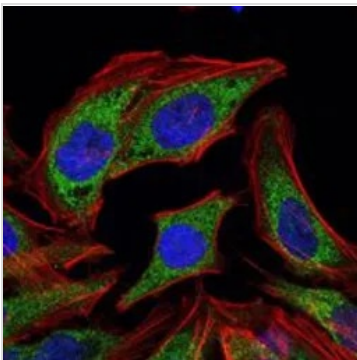
For full product information, images and publications, please visit our [website](#).

**DATA IMAGES**

**GTX60386 IHC-P Image**

IHC-P analysis of breast cancer tissue (left) and brain tissue (right) using GTX60386 PDK1 antibody [4A11].


**GTX60386 WB Image**

WB analysis of NIH3T3 (1), HeLa (2), Jurkat (3), HepG2 (4), PC-12 (5), and Cos7 (6) cell lysate using GTX60386 PDK1 antibody [4A11].

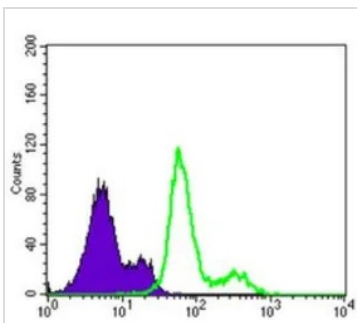

**GTX60386 ICC/IF Image**

ICC/IF analysis of HeLa cells using GTX60386 PDK1 antibody [4A11].

Green : PDK1

Blue: DRAQ5 fluorescent DNA dye

Red: Actin filaments


**GTX60386 FCM Image**

FACS analysis of Lovo cells using GTX60386 PDK1 antibody [4A11].

Green : PDK1

Purple : negative control



For full product information, images and publications, please visit our [website](https://www.genetex.com).