

Glycogen synthase 1 antibody [3A7]

Cat. No. GTX60390

Host	Mouse
Clonality	Monoclonal
Isotype	IgG1
Applications	WB, FCM, ELISA
Reactivity	Human

Package
100 µl

Applications

Application Note

*Optimal dilutions/concentrations should be determined by the researcher.

Suggested dilution	Recommended dilution
WB	1/500 - 1/2000
FCM	1/200 - 1/400
ELISA	1/10000

Not tested in other applications.

Calculated MW 84 kDa. ([Note](#))

Properties

Form	Liquid
Buffer	Ascites
Preservative	0.03% Sodium azide
Storage	Store as concentrated solution. Centrifuge briefly prior to opening vial. For short-term storage (1-2 weeks), store at 4°C. For long-term storage, aliquot and store at -20°C or below. Avoid multiple freeze-thaw cycles.
Immunogen	Purified recombinant fragment of human GYS1 expressed in E. Coli.
Purification	Unpurified
Conjugation	Unconjugated

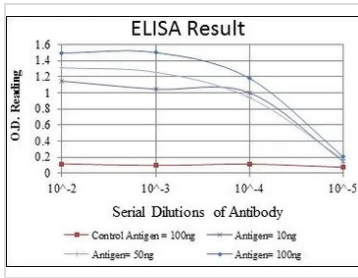
Note

For laboratory research use only. Not for any clinical, therapeutic, or diagnostic use in humans or animals. Not for animal or human consumption.

Purchasers shall not, and agree not to enable third parties to, analyze, copy, reverse engineer or otherwise attempt to determine the structure or sequence of the product.



For full product information, images and publications, please visit our [website](#).

DATA IMAGES

GTX60390 ELISA Image

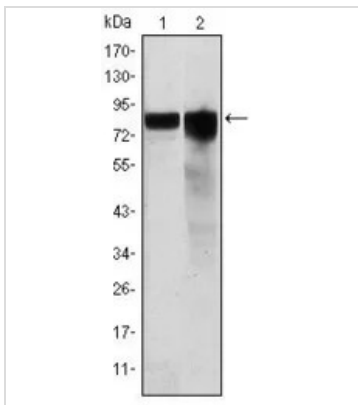
ELISA analysis of antigen using GTX60390 Glycogen synthase 1 antibody [3A7].

Red : Control antigen 100ng

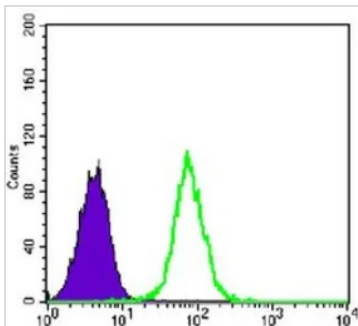
Purple : Antigen 10ng

Green : Antigen 50ng

Blue : Antigen 100ng


GTX60390 WB Image

WB analysis of HeLa (1) and HEK293 (2) cell lysate using GTX60390 Glycogen synthase 1 antibody [3A7].


GTX60390 FCM Image

FACS analysis of K562 cells using GTX60390 Glycogen synthase 1 antibody [3A7].

Green : Glycogen synthase 1

Purple : negative control



For full product information, images and publications, please visit our [website](http://www.genetex.com).