

# alpha Smooth Muscle Actin antibody [1H8]

**Cat. No. GTX60393**

<b>Host</b>	Mouse
<b>Clonality</b>	Monoclonal
<b>Isotype</b>	IgG1
<b>Application</b>	WB, ICC/IF, FACS, ELISA
<b>Reactivity</b>	Human, Mouse, Rat, Monkey

**Package**  
100 µl

## APPLICATION

### Application Note

\*Optimal dilutions/concentrations should be determined by the researcher.

Suggested dilution	Recommended dilution
WB	1/500 - 1/2000
ICC/IF	1/200 - 1/1000
FACS	1/200 - 1/400
ELISA	1/10000

Not tested in other applications.

**Calculated MW** 42 kDa. ( [Note](#) )

## PROPERTIES

<b>Form</b>	Liquid
<b>Buffer</b>	Ascites
<b>Preservative</b>	0.03% Sodium azide
<b>Storage</b>	Store as concentrated solution. Centrifuge briefly prior to opening vial. For short-term storage (1-2 weeks), store at 4°C. For long-term storage, aliquot and store at -20°C or below. Avoid multiple freeze-thaw cycles.
<b>Immunogen</b>	Purified recombinant fragment of human ACTA2 expressed in E. Coli.
<b>Purification</b>	Unpurified
<b>Conjugation</b>	Unconjugated

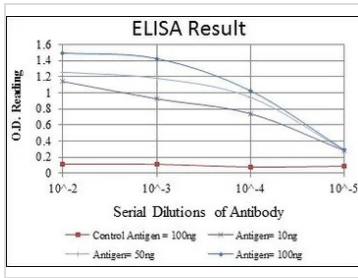
### Note

For laboratory research use only. Not for any clinical, therapeutic, or diagnostic use in humans or animals. Not for animal or human consumption.

Purchasers shall not, and agree not to enable third parties to, analyze, copy, reverse engineer or otherwise attempt to determine the structure or sequence of the product.



For full product information, images and publications, please visit our [website](#).

**DATA IMAGES**

**GTX60393 ELISA Image**

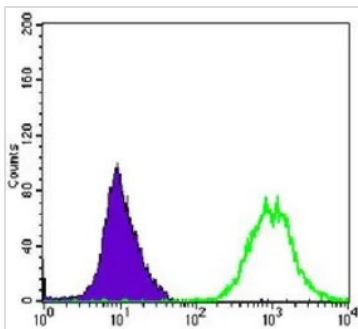
ELISA analysis of antigen using GTX60393 alpha Smooth Muscle Actin antibody [1H8].

Red : Control antigen 100ng

Purple : Antigen 10ng

Green : Antigen 50ng

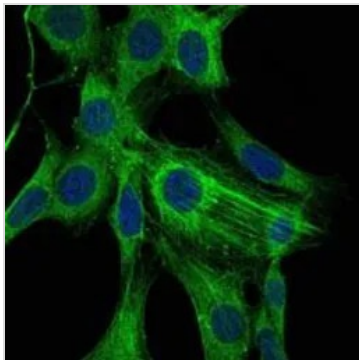
Blue : Antigen 100ng


**GTX60393 FACS Image**

FACS analysis of HeLa cells using GTX60393 alpha Smooth Muscle Actin antibody [1H8].

Green : alpha Smooth Muscle Actin

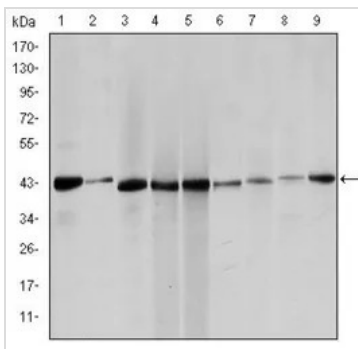
Purple : negative control


**GTX60393 ICC/IF Image**

ICC/IF analysis of NIH3T3 cells using GTX60393 alpha Smooth Muscle Actin antibody [1H8].

Green : alpha Smooth Muscle Actin

Blue: DRAQ5 fluorescent DNA dye


**GTX60393 WB Image**

WB analysis of HeLa (1), Jurkta (2), HepG2 (3), MCF-7 (4), A431 (5), A549 (6), PC-12 (7), NIH3T3 (8) and Cos7 (9) cell lysate using GTX60393 alpha Smooth Muscle Actin antibody [1H8].



For full product information, images and publications, please visit our [website](https://www.genetex.com).