

## AMPK alpha 1 antibody [2B7]

Cat. No. GTX60403

Host	Mouse
Clonality	Monoclonal
Isotype	IgG1
Applications	WB, ICC/IF, IHC-P, FCM, ELISA
Reactivity	Human, Mouse, Rat, Monkey

References ( 3 )

Package

100 µl

## Applications

## Application Note

\*Optimal dilutions/concentrations should be determined by the researcher.

Suggested dilution	Recommended dilution
WB	1/500 - 1/2000
ICC/IF	1/200 - 1/1000
IHC-P	1/200 - 1/1000
FCM	1/200 - 1/400
ELISA	1/10000

Not tested in other applications.

Calculated MW 64 kDa. ( [Note](#) )

## Properties

Form	Liquid
Buffer	Ascites
Preservative	0.03% Sodium azide
Storage	Store as concentrated solution. Centrifuge briefly prior to opening vial. For short-term storage (1-2 weeks), store at 4°C. For long-term storage, aliquot and store at -20°C or below. Avoid multiple freeze-thaw cycles.
Immunogen	Purified recombinant fragment of human PRKAA1 expressed in E. Coli.
Purification	Unpurified
Conjugation	Unconjugated

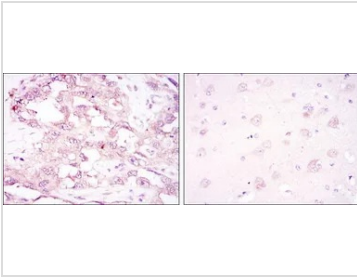
## Note

For laboratory research use only. Not for any clinical, therapeutic, or diagnostic use in humans or animals. Not for animal or human consumption.

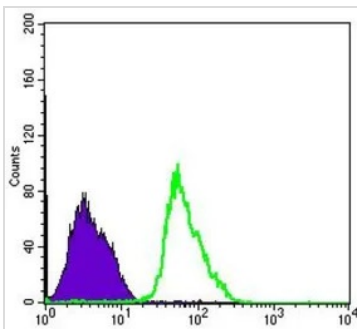
Purchasers shall not, and agree not to enable third parties to, analyze, copy, reverse engineer or otherwise attempt to determine the structure or sequence of the product.



For full product information, images and publications, please visit our [website](#).

**DATA IMAGES**

**GTX60403 IHC-P Image**

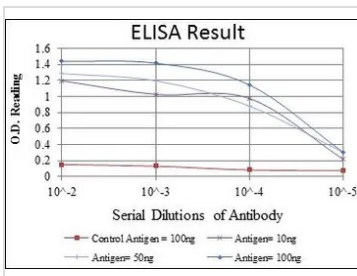
IHC-P analysis of ovarian cancer (left) and brain tissue (right) using GTX60403 AMPK alpha 1 antibody [2B7].


**GTX60403 FCM Image**

FACS analysis of PC-2 cells using GTX60403 AMPK alpha 1 antibody [2B7].

Green : AMPK alpha 1

Purple : negative control


**GTX60403 ELISA Image**

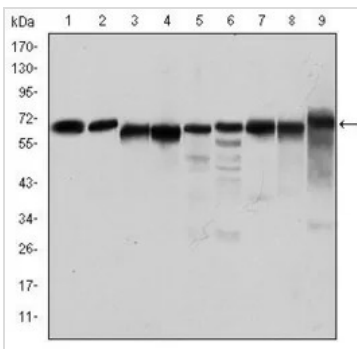
ELISA analysis of antigen using GTX60403 AMPK alpha 1 antibody [2B7].

Red : Control antigen 100ng

Purple : Antigen 10ng

Green : Antigen 50ng

Blue : Antigen 100ng


**GTX60403 WB Image**

WB analysis of Jurkat (1), Hela (2), HepG2 (3), MCF-7 (4), Cos7 (5), NIH-3T3 (6), K562 (7), HEK293 (8), and PC-12 (9) cell lysate using GTX60403 AMPK alpha 1 antibody [2B7].



For full product information, images and publications, please visit our [website](http://www.genetex.com).