

Cortactin antibody [4C6]

Cat. No. GTX60419

| | |
|---------------------|------------------|
| Host | Mouse |
| Clonality | Monoclonal |
| Isotype | IgG1 |
| Applications | WB, IHC-P, ELISA |
| Reactivity | Human, Mouse |

Package
100 µl

Applications

Application Note

*Optimal dilutions/concentrations should be determined by the researcher.

| Suggested dilution | Recommended dilution |
|--------------------|----------------------|
| WB | 1/500 - 1/2000 |
| IHC-P | 1/200 - 1/1000 |
| ELISA | 1/10000 |

Not tested in other applications.

Calculated MW 62 kDa. ([Note](#))

Properties

| | |
|---------------------|----------------------------------------------------------------------------------------------------------------------------------------------------------------------------------------------------------------------------|
| Form | Liquid |
| Buffer | Ascites |
| Preservative | 0.03% Sodium azide |
| Storage | Store as concentrated solution. Centrifuge briefly prior to opening vial. For short-term storage (1-2 weeks), store at 4°C. For long-term storage, aliquot and store at -20°C or below. Avoid multiple freeze-thaw cycles. |
| Immunogen | Purified recombinant fragment of human CTTN expressed in E. Coli. |
| Purification | Unpurified |
| Conjugation | Unconjugated |

Note

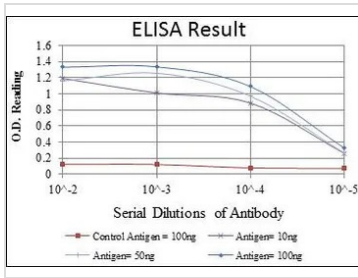
For laboratory research use only. Not for any clinical, therapeutic, or diagnostic use in humans or animals. Not for animal or human consumption.

Purchasers shall not, and agree not to enable third parties to, analyze, copy, reverse engineer or otherwise attempt to determine the structure or sequence of the product.



For full product information, images and publications, please visit our [website](#).

DATA IMAGES



GTX60419 ELISA Image

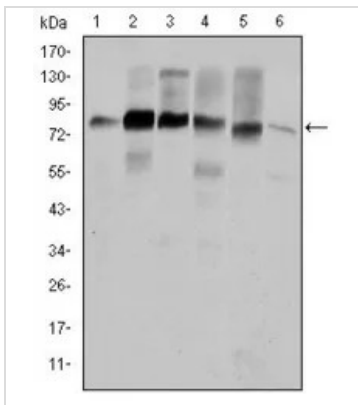
ELISA analysis of antigen using GTX60419 Cortactin antibody [4C6].

Red : Control antigen 100ng

Purple : Antigen 10ng

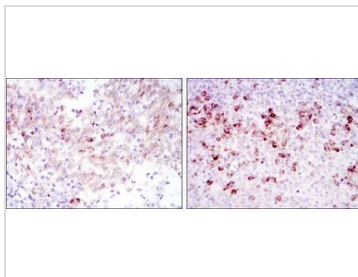
Green : Antigen 50ng

Blue : Antigen 100ng



GTX60419 WB Image

WB analysis of HeLa (1), A431 (2), MCF-7 (3), SR-BR-3 (4), HepG2 (5) and NIH3T3 (6) cell lysate using GTX60419 Cortactin antibody [4C6].



GTX60419 IHC-P Image

IHC-P analysis of cervical cancer tissue (left) and tonsil tissue (right) using GTX60419 Cortactin antibody [4C6].



For full product information, images and publications, please visit our [website](http://www.genetex.com).