

eIF4E antibody [5D11]

Cat. No. GTX60420

Host	Mouse
Clonality	Monoclonal
Isotype	IgG1
Applications	WB, ICC/IF, IHC-P, FCM, ELISA
Reactivity	Human

Package
100 µl

Applications

Application Note

*Optimal dilutions/concentrations should be determined by the researcher.

Suggested dilution	Recommended dilution
WB	1/500 - 1/2000
ICC/IF	1/200 - 1/1000
IHC-P	1/200 - 1/1000
FCM	1/200 - 1/400
ELISA	1/10000

Not tested in other applications.

Calculated MW 25 kDa. ([Note](#))

Properties

Form	Liquid
Buffer	Ascites
Preservative	0.03% Sodium azide
Storage	Store as concentrated solution. Centrifuge briefly prior to opening vial. For short-term storage (1-2 weeks), store at 4°C. For long-term storage, aliquot and store at -20°C or below. Avoid multiple freeze-thaw cycles.
Immunogen	Purified recombinant fragment of human EIF4E expressed in E. Coli.
Purification	Unpurified
Conjugation	Unconjugated

Note

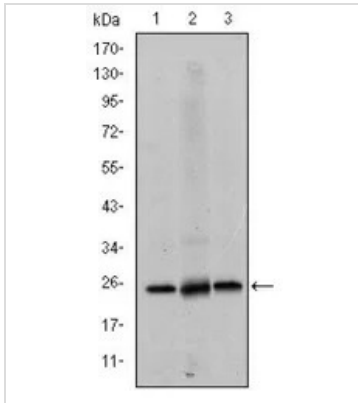
For laboratory research use only. Not for any clinical, therapeutic, or diagnostic use in humans or animals. Not for animal or human consumption.

Purchasers shall not, and agree not to enable third parties to, analyze, copy, reverse engineer or otherwise attempt to determine the structure or sequence of the product.



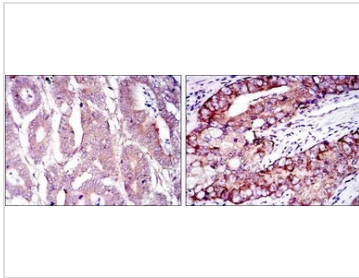
For full product information, images and publications, please visit our [website](#).

DATA IMAGES



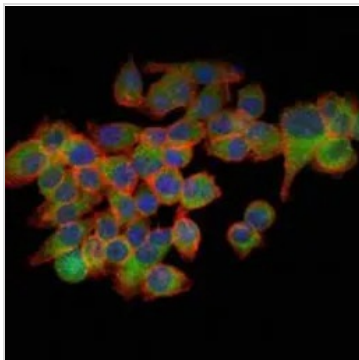
GTX60420 WB Image

WB analysis of HeLa (1), HEK293 (2) and K562 (3) cell lysate using GTX60420 eIF4E antibody [5D11].



GTX60420 IHC-P Image

IHC-P analysis of stomach cancer (left) and prostate cancer (right) using GTX60420 eIF4E antibody [5D11].



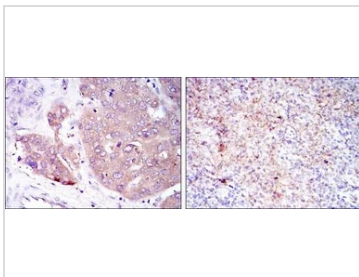
GTX60420 ICC/IF Image

ICC/IF analysis of GC-7901 cells using GTX60420 eIF4E antibody [5D11].

Green : eIF4E

Blue: DRAQ5 fluorescent DNA dye

Red: Actin filaments



GTX60420 IHC-P Image

IHC-P analysis of liver cancer (left) and submaxillary tumor (right) using GTX60420 eIF4E antibody [5D11].



For full product information, images and publications, please visit our [website](https://www.genetex.com).