

eEF2 antibody [5B6]

Cat. No. GTX60421

Host	Mouse
Clonality	Monoclonal
Isotype	IgG1
Application	WB, ICC/IF, IHC-P, ELISA
Reactivity	Human, Mouse

Package
100 µl

APPLICATION

Application Note

*Optimal dilutions/concentrations should be determined by the researcher.

Suggested dilution	Recommended dilution
WB	1/500 - 1/2000
ICC/IF	1/200 - 1/1000
IHC-P	1/200 - 1/1000
ELISA	1/10000

Not tested in other applications.

Calculated MW 95 kDa. ([Note](#))

PROPERTIES

Form	Liquid
Buffer	Ascites
Preservative	0.03% Sodium azide
Storage	Store as concentrated solution. Centrifuge briefly prior to opening vial. For short-term storage (1-2 weeks), store at 4°C. For long-term storage, aliquot and store at -20°C or below. Avoid multiple freeze-thaw cycles.
Immunogen	Purified recombinant fragment of human EEF2 expressed in E. Coli.
Purification	Unpurified
Conjugation	Unconjugated

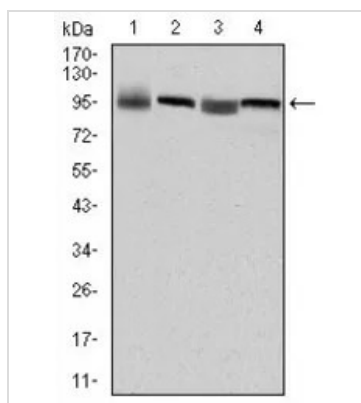
Note

For laboratory research use only. Not for any clinical, therapeutic, or diagnostic use in humans or animals. Not for animal or human consumption.

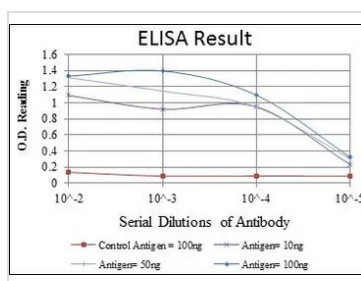
Purchasers shall not, and agree not to enable third parties to, analyze, copy, reverse engineer or otherwise attempt to determine the structure or sequence of the product.



For full product information, images and publications, please visit our [website](#).

DATA IMAGES

GTX60421 WB Image

WB analysis of HepG2 (1), HeLa (2), HEK293 (3) and A431 (4) cell lysate using GTX60421 eEF2 antibody [5B6].


GTX60421 ELISA Image

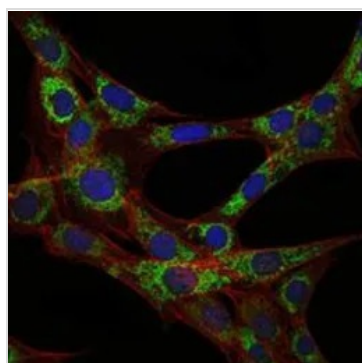
ELISA analysis of antigen using GTX60421 eEF2 antibody [5B6].

Red : Control antigen 100ng

Purple : Antigen 10ng

Green : Antigen 50ng

Blue : Antigen 100ng

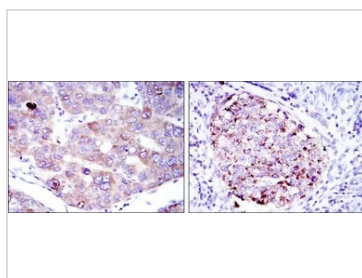

GTX60421 ICC/IF Image

ICC/IF analysis of 3T3-L1 cells using GTX60421 eEF2 antibody [5B6].

Green : eEF2

Blue: DRAQ5 fluorescent DNA dye

Red: Actin filaments


GTX60421 IHC-P Image

IHC-P analysis of liver cancer tissue (left) and kidney cancer tissue (right) using GTX60421 eEF2 antibody [5B6].



For full product information, images and publications, please visit our [website](https://www.genetex.com).