

## FUK antibody [6E2]

**Cat. No. GTX60438**

<b>Host</b>	Mouse
<b>Clonality</b>	Monoclonal
<b>Isotype</b>	IgG1
<b>Applications</b>	WB, FCM, ELISA
<b>Reactivity</b>	Human, Mouse, Rat, Monkey

**Package**  
100 µl

## Applications

**Application Note**

\*Optimal dilutions/concentrations should be determined by the researcher.

Suggested dilution	Recommended dilution
WB	1/500 - 1/2000
FCM	1/200 - 1/400
ELISA	1/10000

Not tested in other applications.

**Calculated MW** 118 kDa. ([Note](#))

## Properties

<b>Form</b>	Liquid
<b>Buffer</b>	Ascites
<b>Preservative</b>	0.03% Sodium azide
<b>Storage</b>	Store as concentrated solution. Centrifuge briefly prior to opening vial. For short-term storage (1-2 weeks), store at 4°C. For long-term storage, aliquot and store at -20°C or below. Avoid multiple freeze-thaw cycles.
<b>Immunogen</b>	Purified recombinant fragment of human FUK expressed in E. Coli.
<b>Purification</b>	Unpurified
<b>Conjugation</b>	Unconjugated

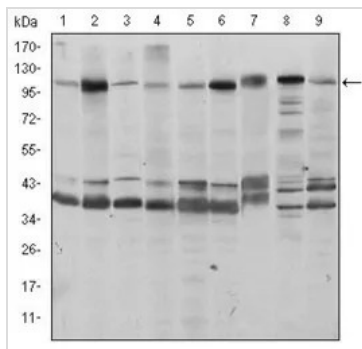
**Note** For laboratory research use only. Not for any clinical, therapeutic, or diagnostic use in humans or animals. Not for animal or human consumption.

Purchasers shall not, and agree not to enable third parties to, analyze, copy, reverse engineer or otherwise attempt to determine the structure or sequence of the product.



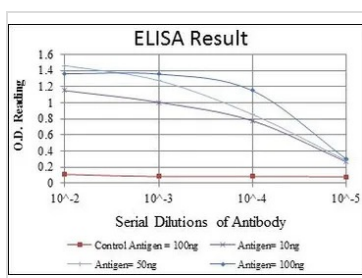
For full product information, images and publications, please visit our [website](#).

DATA IMAGES



**GTX60438 WB Image**

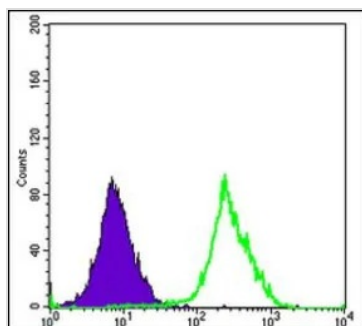
WB analysis of HeLa (1), HepG2 (2), Jurkat (3), A431 (4), HEK293 (5), MCF-7 (6), PC-12 (7), Cos7 (8), and NIH3T3 (9) cell lysate using GTX60438 FUK antibody [6E2].



**GTX60438 ELISA Image**

ELISA analysis of antigen using GTX60438 FUK antibody [6E2].

- Red : Control antigen 100ng
- Purple : Antigen 10ng
- Green : Antigen 50ng
- Blue : Antigen 100ng



**GTX60438 FCM Image**

FACS analysis of HeLa cells using GTX60438 FUK antibody [6E2].

- Green : FUK
- Purple : negative control



For full product information, images and publications, please visit our [website](#).