

## SMN1 antibody [2F1]

**Cat. No. GTX60451**

|                     |                       |
|---------------------|-----------------------|
| <b>Host</b>         | Mouse                 |
| <b>Clonality</b>    | Monoclonal            |
| <b>Isotype</b>      | IgG1                  |
| <b>Applications</b> | WB, IHC-P, FCM, ELISA |
| <b>Reactivity</b>   | Human, Monkey         |

**Package**  
100 µl

## Applications

**Application Note**

\*Optimal dilutions/concentrations should be determined by the researcher.

| Suggested dilution | Recommended dilution |
|--------------------|----------------------|
| WB                 | 1/500 - 1/2000       |
| IHC-P              | 1/200 - 1/1000       |
| FCM                | 1/200 - 1/400        |
| ELISA              | 1/10000              |

Not tested in other applications.

**Calculated MW** 32 kDa. ([Note](#))

## Properties

|                     |  |
|---------------------|--|
| <b>Form</b>         | Liquid   |
| <b>Buffer</b>       | Ascites  |
| <b>Preservative</b> | 0.03% Sodium azide   |
| <b>Storage</b>      | Store as concentrated solution. Centrifuge briefly prior to opening vial. For short-term storage (1-2 weeks), store at 4°C. For long-term storage, aliquot and store at -20°C or below. Avoid multiple freeze-thaw cycles. |
| <b>Immunogen</b>    | Purified recombinant fragment(148-294 a.a.) of human SMN1 expressed in E. Coli.  |
| <b>Purification</b> | Unpurified   |
| <b>Conjugation</b>  | Unconjugated   |

**Note**

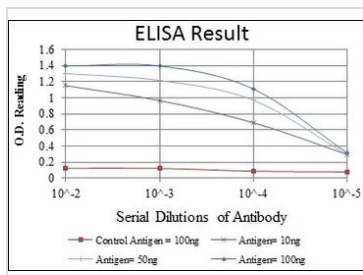
For laboratory research use only. Not for any clinical, therapeutic, or diagnostic use in humans or animals. Not for animal or human consumption.

Purchasers shall not, and agree not to enable third parties to, analyze, copy, reverse engineer or otherwise attempt to determine the structure or sequence of the product.



For full product information, images and publications, please visit our [website](#).

DATA IMAGES



**GTX60451 ELISA Image**

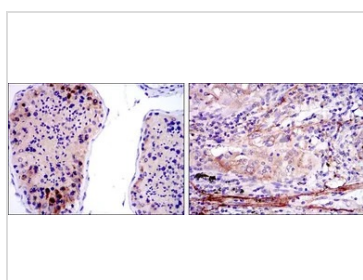
ELISA analysis of antigen using GTX60451 SMN1 antibody [2F1].

Red : Control antigen 100ng

Purple : Antigen 10ng

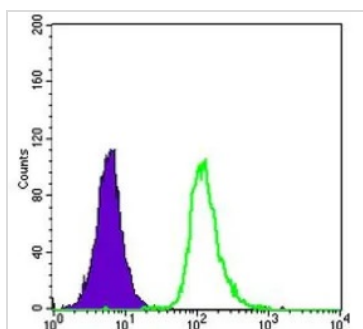
Green : Antigen 50ng

Blue : Antigen 100ng



**GTX60451 IHC-P Image**

IHC-P analysis of testis tissue (left) and lung cancer tissue (right) using GTX60451 SMN1 antibody [2F1].

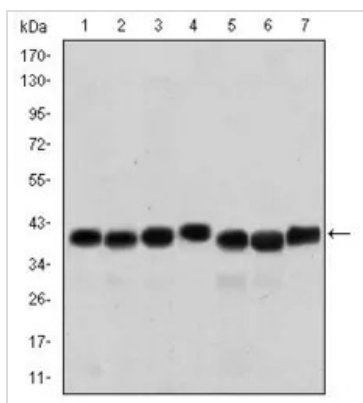


**GTX60451 FCM Image**

FACS analysis of HepG2 cells using GTX60451 SMN1 antibody [2F1].

Green : SMN1

Purple : negative control



**GTX60451 WB Image**

WB analysis of HepG2 (1), HeLa (2), K562 (3), Jurkat (4), SKBR-3 (5), A431 (6) and Cos7 (7) cell lysate using GTX60451 SMN1 antibody [2F1].



For full product information, images and publications, please visit our [website](#).