

ASK1 antibody [2E4]

Cat. No. GTX60456

Host	Mouse
Clonality	Monoclonal
Isotype	IgG1
Application	WB, ICC/IF, IHC-P, FACS, ELISA
Reactivity	Human

Package
100 µl

APPLICATION

Application Note

*Optimal dilutions/concentrations should be determined by the researcher.

Suggested dilution	Recommended dilution
WB	1/500 - 1/2000
ICC/IF	1/200 - 1/1000
IHC-P	1/200 - 1/1000
FACS	1/200 - 1/400
ELISA	1/10000

Not tested in other applications.

Calculated MW 155 kDa. ([Note](#))

PROPERTIES

Form	Liquid
Buffer	Ascites
Preservative	0.03% Sodium azide
Storage	Store as concentrated solution. Centrifuge briefly prior to opening vial. For short-term storage (1-2 weeks), store at 4°C. For long-term storage, aliquot and store at -20°C or below. Avoid multiple freeze-thaw cycles.
Immunogen	Purified recombinant fragment of human MAP3K5 expressed in E. Coli.
Purification	Unpurified
Conjugation	Unconjugated

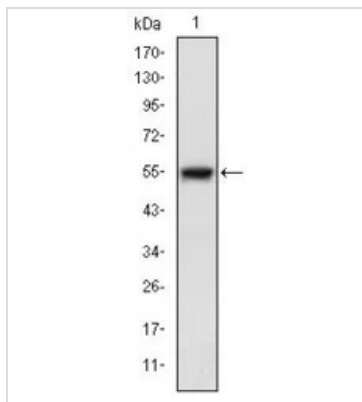
Note

For laboratory research use only. Not for any clinical, therapeutic, or diagnostic use in humans or animals. Not for animal or human consumption.

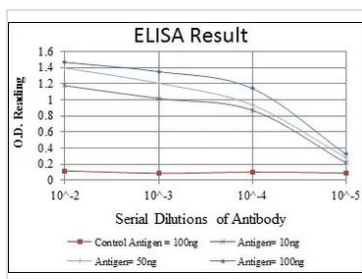
Purchasers shall not, and agree not to enable third parties to, analyze, copy, reverse engineer or otherwise attempt to determine the structure or sequence of the product.



For full product information, images and publications, please visit our [website](#).

DATA IMAGES

GTx60456 WB Image

WB analysis of human ASK1 (AA: 922-1108) recombinant protein using GTx60456 ASK1 antibody [2E4].


GTx60456 ELISA Image

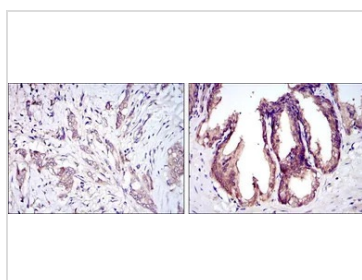
ELISA analysis of antigen using GTx60456 ASK1 antibody [2E4].

Red : Control antigen 100ng

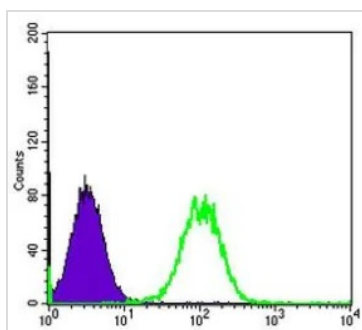
Purple : Antigen 10ng

Green : Antigen 50ng

Blue : Antigen 100ng


GTx60456 IHC-P Image

IHC-P analysis of breast cancer tissue (left) and prostate tissue (right) using GTx60456 ASK1 antibody [2E4].


GTx60456 FACS Image

FACS analysis of HeLa cells using GTx60456 ASK1 antibody [2E4].

Green : ASK1

Purple : negative control



For full product information, images and publications, please visit our [website](http://www.genetex.com).