

# Hsp90 beta antibody [5G4]

**Cat. No. GTX60458**

<b>Host</b>	Mouse
<b>Clonality</b>	Monoclonal
<b>Isotype</b>	IgG1
<b>Applications</b>	WB, ICC/IF, IHC-P, FCM, ELISA
<b>Reactivity</b>	Human, Mouse, Rat, Monkey

**Package**  
100 µl

## Applications

### Application Note

\*Optimal dilutions/concentrations should be determined by the researcher.

Suggested dilution	Recommended dilution
WB	1/500 - 1/2000
ICC/IF	1/200 - 1/1000
IHC-P	1/200 - 1/1000
FCM	1/200 - 1/400
ELISA	1/10000

Not tested in other applications.

**Calculated MW** 83 kDa. ( [Note](#) )

## Properties

<b>Form</b>	Liquid
<b>Buffer</b>	Ascites
<b>Preservative</b>	0.03% Sodium azide
<b>Storage</b>	Store as concentrated solution. Centrifuge briefly prior to opening vial. For short-term storage (1-2 weeks), store at 4°C. For long-term storage, aliquot and store at -20°C or below. Avoid multiple freeze-thaw cycles.
<b>Immunogen</b>	Purified recombinant fragment of human HSP90AB1 expressed in E. Coli.
<b>Purification</b>	Unpurified
<b>Conjugation</b>	Unconjugated

### Note

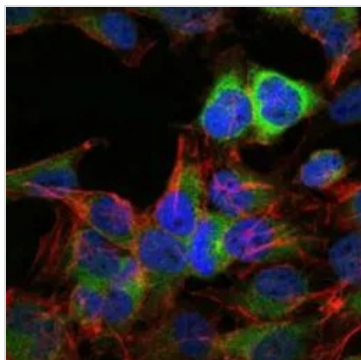
For laboratory research use only. Not for any clinical, therapeutic, or diagnostic use in humans or animals. Not for animal or human consumption.

Purchasers shall not, and agree not to enable third parties to, analyze, copy, reverse engineer or otherwise attempt to determine the structure or sequence of the product.



For full product information, images and publications, please visit our [website](#).

DATA IMAGES



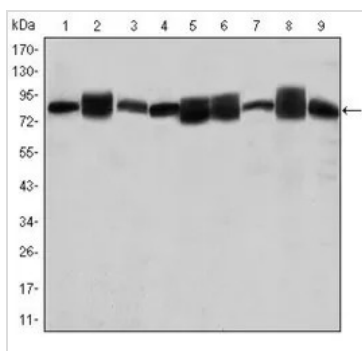
**GTx60458 ICC/IF Image**

ICC/IF analysis of HeLa cells using GTx60458 HSP90 beta antibody [5G4].

Green : HSP90 beta

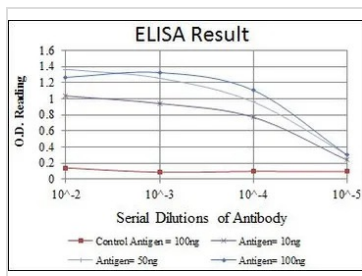
Blue: DRAQ5 fluorescent DNA dye

Red: Actin filaments



**GTx60458 WB Image**

WB analysis of Jurkat (1), A431 (2), HeLa (3), A549 (4), HEK293 (5), K562 (6), NIH3T3 (7), PC-12 (8) and Cos7 (9) cell lysate using GTx60458 HSP90 beta antibody [5G4].



**GTx60458 ELISA Image**

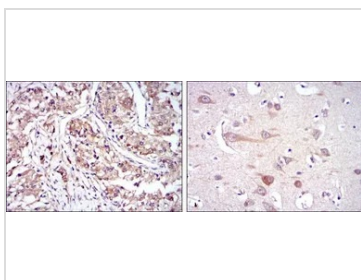
ELISA analysis of antigen using GTx60458 HSP90 beta antibody [5G4].

Red : Control antigen 100ng

Purple : Antigen 10ng

Green : Antigen 50ng

Blue : Antigen 100ng



**GTx60458 IHC-P Image**

IHC-P analysis of kidney cancer tissue (left) and brain tissue (right) using GTx60458 HSP90 beta antibody [5G4].



For full product information, images and publications, please visit our [website](https://www.genetex.com).