

alpha Smooth Muscle Actin antibody [4A4]

Cat. No. GTX60466

| | |
|--------------------|--------------------------------|
| Host | Mouse |
| Clonality | Monoclonal |
| Isotype | IgG1 |
| Application | WB, ICC/IF, IHC-P, FACS, ELISA |
| Reactivity | Human, Mouse, Rat, Monkey |

Reference (2)
Package
100 µl

APPLICATION

Application Note

*Optimal dilutions/concentrations should be determined by the researcher.

| Suggested dilution | Recommended dilution |
|--------------------|----------------------|
| WB | 1/500 - 1/2000 |
| ICC/IF | 1/200 - 1/1000 |
| IHC-P | 1/200 - 1/1000 |
| FACS | 1/200 - 1/400 |
| ELISA | 1/10000 |

Not tested in other applications.

Calculated MW 42 kDa. ([Note](#))

PROPERTIES

| | |
|---------------------|--|
| Form | Liquid |
| Buffer | Ascites |
| Preservative | 0.03% Sodium azide |
| Storage | Store as concentrated solution. Centrifuge briefly prior to opening vial. For short-term storage (1-2 weeks), store at 4°C. For long-term storage, aliquot and store at -20°C or below. Avoid multiple freeze-thaw cycles. |
| Immunogen | Synthesized peptide of human alpha Smooth Muscle Actin. |
| Purification | Unpurified |
| Conjugation | Unconjugated |

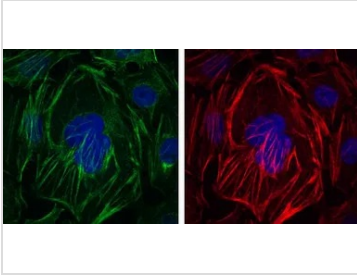
Note

For laboratory research use only. Not for any clinical, therapeutic, or diagnostic use in humans or animals. Not for animal or human consumption.

Purchasers shall not, and agree not to enable third parties to, analyze, copy, reverse engineer or otherwise attempt to determine the structure or sequence of the product.



For full product information, images and publications, please visit our [website](#).

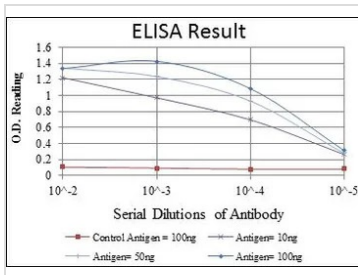
DATA IMAGES

GTX60466 ICC/IF Image

ICC/IF analysis of HepG2 cells using GTX60466 alpha Smooth Muscle Actin antibody [4A4].

Green : alpha Smooth Muscle Actin

Blue: DRAQ5 fluorescent DNA dye

Red: Actin filaments


GTX60466 ELISA Image

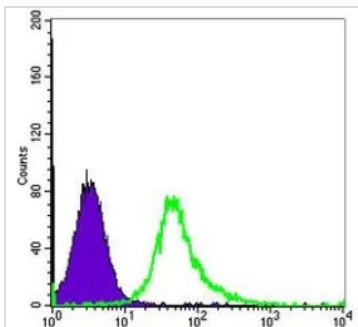
ELISA analysis of antigen using GTX60466 alpha Smooth Muscle Actin antibody [4A4].

Red : Control antigen 100ng

Purple : Antigen 10ng

Green : Antigen 50ng

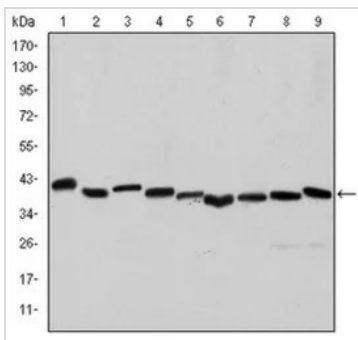
Blue : Antigen 100ng


GTX60466 FACS Image

FACS analysis of HeLa cells using GTX60466 alpha Smooth Muscle Actin antibody [4A4].

Green : alpha Smooth Muscle Actin

Purple : negative control


GTX60466 WB Image

WB analysis of HeLa (1), A431 (2), Jurkat (3), K562 (4), HEK293 (5), HepG2 (6), NIH3T3 (7), PC-12 (8) and Cos7 (9) cell lysate using GTX60466 alpha Smooth Muscle Actin antibody [4A4].



For full product information, images and publications, please visit our [website](https://www.genetex.com).