

TCP1 beta antibody [5B5C4]

Cat. No. GTX60505

| | |
|---------------------|---------------------------|
| Host | Mouse |
| Clonality | Monoclonal |
| Isotype | IgG1 |
| Applications | WB, ICC/IF, FCM, ELISA |
| Reactivity | Human, Mouse, Rat, Monkey |

Package
100 µl

Applications

Application Note

*Optimal dilutions/concentrations should be determined by the researcher.

| Suggested dilution | Recommended dilution |
|--------------------|----------------------|
| WB | 1/500 - 1/2000 |
| ICC/IF | 1/200 - 1/1000 |
| FCM | 1/200 - 1/400 |
| ELISA | 1/10000 |

Not tested in other applications.

Calculated MW 57 kDa. ([Note](#))

Properties

| | |
|---------------------|----------------------------------------------------------------------------------------------------------------------------------------------------------------------------------------------------------------------------|
| Form | Liquid |
| Buffer | Ascites |
| Preservative | 0.03% Sodium azide |
| Storage | Store as concentrated solution. Centrifuge briefly prior to opening vial. For short-term storage (1-2 weeks), store at 4°C. For long-term storage, aliquot and store at -20°C or below. Avoid multiple freeze-thaw cycles. |
| Immunogen | Purified recombinant fragment of human TCP1 beta expressed in E. Coli. |
| Purification | Unpurified |
| Conjugation | Unconjugated |

Note

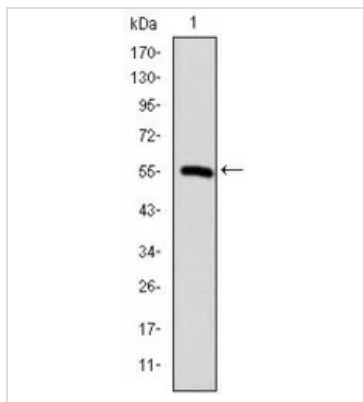
For laboratory research use only. Not for any clinical, therapeutic, or diagnostic use in humans or animals. Not for animal or human consumption.

Purchasers shall not, and agree not to enable third parties to, analyze, copy, reverse engineer or otherwise attempt to determine the structure or sequence of the product.



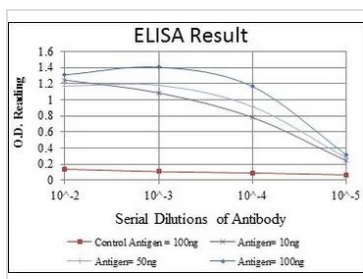
For full product information, images and publications, please visit our [website](#).

DATA IMAGES



GTX60505 WB Image

WB analysis of human TCP1 (AA: 87-290) recombinant protein using GTX60505 TCP1 beta antibody [5B5C4].



GTX60505 ELISA Image

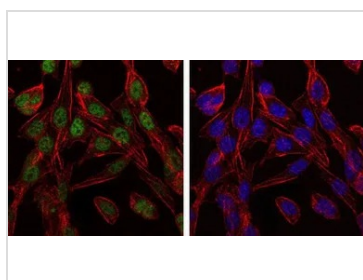
ELISA analysis of antigen using GTX60505 TCP1 beta antibody [5B5C4].

Red : Control antigen 100ng

Purple : Antigen 10ng

Green : Antigen 50ng

Blue : Antigen 100ng



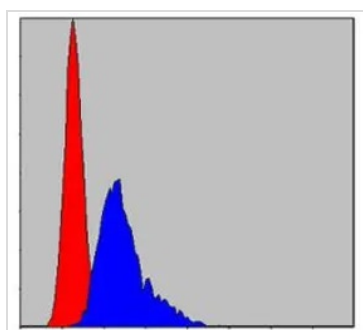
GTX60505 ICC/IF Image

ICC/IF analysis of 3T3-L1 cells using GTX60505 TCP1 beta antibody [5B5C4].

Green : TCP1 beta

Blue: DRAQ5 fluorescent DNA dye

Red: Actin filaments



GTX60505 FCM Image

FACS analysis of NIH3T3 cells using GTX60505 TCP1 beta antibody [5B5C4].

Blue : TCP1 beta

Red : negative control



For full product information, images and publications, please visit our [website](http://www.genetex.com).