

KIF22 antibody [1E3]

Cat. No. GTX60508

Host	Mouse
Clonality	Monoclonal
Isotype	IgG1
Applications	WB, IHC-P, FCM, ELISA
Reactivity	Human, Mouse

Package
100 µl

Applications

Application Note

*Optimal dilutions/concentrations should be determined by the researcher.

Suggested dilution	Recommended dilution
WB	1/500 - 1/2000
IHC-P	1/200 - 1/1000
FCM	1/200 - 1/400
ELISA	1/10000

Not tested in other applications.

Calculated MW 73 kDa. ([Note](#))

Properties

Form	Liquid
Buffer	Ascites
Preservative	0.03% Sodium azide
Storage	Store as concentrated solution. Centrifuge briefly prior to opening vial. For short-term storage (1-2 weeks), store at 4°C. For long-term storage, aliquot and store at -20°C or below. Avoid multiple freeze-thaw cycles.
Immunogen	Purified recombinant fragment of human KID expressed in E. Coli.
Purification	Unpurified
Conjugation	Unconjugated

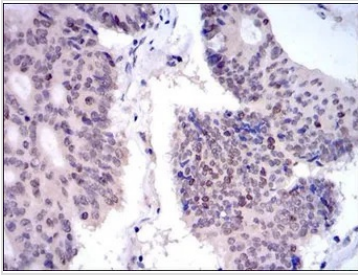
Note

For laboratory research use only. Not for any clinical, therapeutic, or diagnostic use in humans or animals. Not for animal or human consumption.

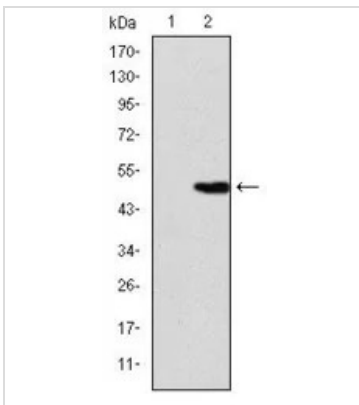
Purchasers shall not, and agree not to enable third parties to, analyze, copy, reverse engineer or otherwise attempt to determine the structure or sequence of the product.



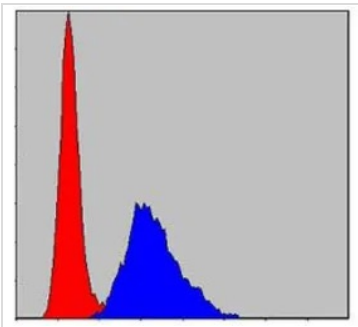
For full product information, images and publications, please visit our [website](#).

DATA IMAGES

GTx60508 IHC-P Image

IHC-P analysis of colon cancer tissue using GTx60508 KIF22 antibody [1E3].


GTx60508 WB Image

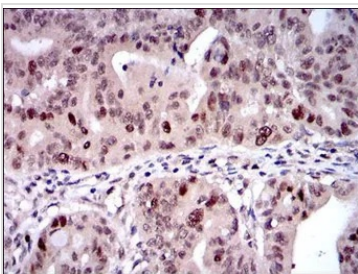
WB analysis of HEK293 (1) and KIF22(AA: 225-419)-hlgGfC transfected HEK293 (2) cell lysate using GTx60508 KIF22 antibody [1E3].


GTx60508 FCM Image

FACS analysis of NIH3T3 cells using GTx60508 KIF22 antibody [1E3].

Blue : KID

Red : negative control


GTx60508 IHC-P Image

IHC-P analysis of rectum cancer tissue using GTx60508 KIF22 antibody [1E3].



For full product information, images and publications, please visit our [website](https://www.genetex.com).