

# DLK1 antibody [3A10]

**Cat. No. GTX60511**

<b>Host</b>	Mouse
<b>Clonality</b>	Monoclonal
<b>Isotype</b>	IgG1
<b>Applications</b>	WB, ICC/IF, FCM, ELISA, PLA
<b>Reactivity</b>	Human, Mouse

References ( 2 )

Package

100 µl

## Applications

### Application Note

\*Optimal dilutions/concentrations should be determined by the researcher.

Suggested dilution	Recommended dilution
WB	1/500 - 1/2000
ICC/IF	1/200 - 1/1000
FCM	1/200 - 1/400
ELISA	1/10000
PLA	Assay dependent

Not tested in other applications.

**Calculated MW** 41 kDa. ( [Note](#) )

## Properties

<b>Form</b>	Liquid
<b>Buffer</b>	Ascites
<b>Preservative</b>	0.03% Sodium azide
<b>Storage</b>	Store as concentrated solution. Centrifuge briefly prior to opening vial. For short-term storage (1-2 weeks), store at 4°C. For long-term storage, aliquot and store at -20°C or below. Avoid multiple freeze-thaw cycles.
<b>Immunogen</b>	Purified recombinant fragment of human DLK1 expressed in E. Coli.
<b>Purification</b>	Unpurified
<b>Conjugation</b>	Unconjugated

### Note

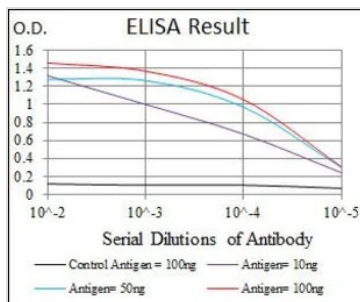
For laboratory research use only. Not for any clinical, therapeutic, or diagnostic use in humans or animals. Not for animal or human consumption.

Purchasers shall not, and agree not to enable third parties to, analyze, copy, reverse engineer or otherwise attempt to determine the structure or sequence of the product.



For full product information, images and publications, please visit our [website](#).

DATA IMAGES



**GTX60511 ELISA Image**

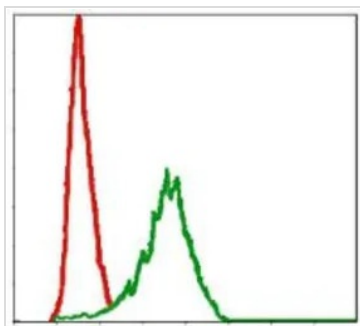
ELISA analysis of antigen using GTX60511 DLK1 antibody [3A10].

Black : Control antigen 100ng

Purple : Antigen 10ng

Blue : Antigen 50ng

Red : Antigen 100ng

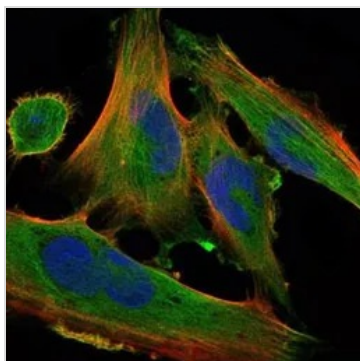


**GTX60511 FCM Image**

FACS analysis of NIH3T3 cells using GTX60511 DLK1 antibody [3A10].

Green : DLK1

Red : negative control



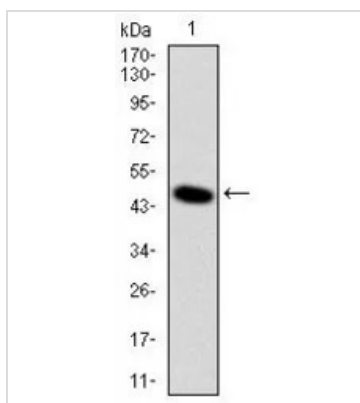
**GTX60511 ICC/IF Image**

ICC/IF analysis of U251 cells using GTX60511 DLK1 antibody [3A10].

Green : DLK1

Blue: DRAQ5 fluorescent DNA dye

Red: Actin filaments



**GTX60511 WB Image**

WB analysis of human DLK1 (AA: 174-349) recombinant protein using GTX60511 DLK1 antibody [3A10].



For full product information, images and publications, please visit our [website](http://www.genetex.com).