

UBE2I antibody [1B10]

Cat. No. GTX60512

Host	Mouse
Clonality	Monoclonal
Isotype	IgG1
Applications	WB, ICC/IF, IHC-P, FCM, ELISA
Reactivity	Human, Monkey

Package
100 µl

Applications

Application Note

*Optimal dilutions/concentrations should be determined by the researcher.

Suggested dilution	Recommended dilution
WB	1/500 - 1/2000
ICC/IF	1/200 - 1/1000
IHC-P	1/200 - 1/1000
FCM	1/200 - 1/400
ELISA	1/10000

Not tested in other applications.

Calculated MW 18 kDa. ([Note](#))

Properties

Form	Liquid
Buffer	Ascites
Preservative	0.03% Sodium azide
Storage	Store as concentrated solution. Centrifuge briefly prior to opening vial. For short-term storage (1-2 weeks), store at 4°C. For long-term storage, aliquot and store at -20°C or below. Avoid multiple freeze-thaw cycles.
Immunogen	Purified recombinant fragment of human UBE2I expressed in E. Coli.
Purification	Unpurified
Conjugation	Unconjugated

Note

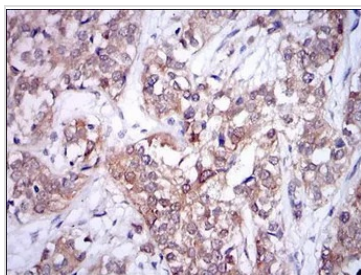
For laboratory research use only. Not for any clinical, therapeutic, or diagnostic use in humans or animals. Not for animal or human consumption.

Purchasers shall not, and agree not to enable third parties to, analyze, copy, reverse engineer or otherwise attempt to determine the structure or sequence of the product.



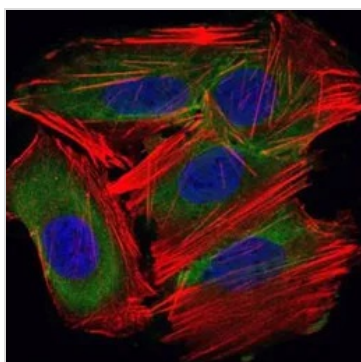
For full product information, images and publications, please visit our [website](#).

DATA IMAGES



GTX60512 IHC-P Image

IHC-P analysis of bladder cancer tissue using GTX60512 UBE2I antibody [1B10].



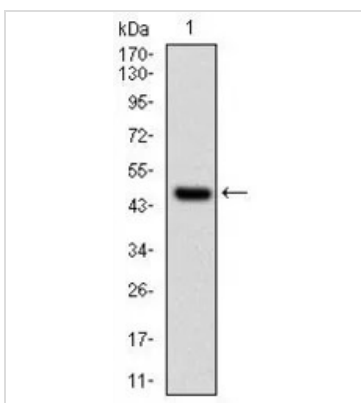
GTX60512 ICC/IF Image

ICC/IF analysis of HepG2 cells using GTX60512 UBE2I antibody [1B10].

Green : UBE2I

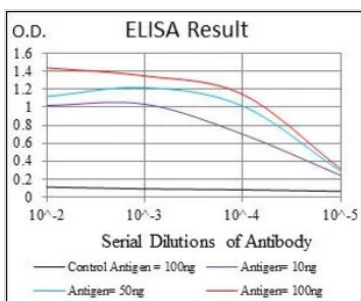
Blue: DRAQ5 fluorescent DNA dye

Red: Actin filaments



GTX60512 WB Image

WB analysis of human UBE2I (AA: 1-158) recombinant protein using GTX60512 UBE2I antibody [1B10].



GTX60512 ELISA Image

ELISA analysis of antigen using GTX60512 UBE2I antibody [1B10].

Black : Control antigen 100ng

Purple : Antigen 10ng

Blue : Antigen 50ng

Red : Antigen 100ng



For full product information, images and publications, please visit our [website](#).