

# Bmi1 antibody [3E3]

**Cat. No. GTX60516**

<b>Host</b>	Mouse
<b>Clonality</b>	Monoclonal
<b>Isotype</b>	IgG1
<b>Applications</b>	WB, ICC/IF, IHC-P, FCM, ELISA
<b>Reactivity</b>	Human, Mouse

**Package**  
100 µl

## Applications

### Application Note

\*Optimal dilutions/concentrations should be determined by the researcher.

Suggested dilution	Recommended dilution
WB	1/500 - 1/2000
ICC/IF	1/200 - 1/1000
IHC-P	1/200 - 1/1000
FCM	1/200 - 1/400
ELISA	1/10000

Not tested in other applications.

**Calculated MW** 37 kDa. ( [Note](#) )

## Properties

<b>Form</b>	Liquid
<b>Buffer</b>	Ascites
<b>Preservative</b>	0.03% Sodium azide
<b>Storage</b>	Store as concentrated solution. Centrifuge briefly prior to opening vial. For short-term storage (1-2 weeks), store at 4°C. For long-term storage, aliquot and store at -20°C or below. Avoid multiple freeze-thaw cycles.
<b>Immunogen</b>	Purified recombinant fragment of human BMI1 expressed in E. Coli.
<b>Purification</b>	Unpurified
<b>Conjugation</b>	Unconjugated

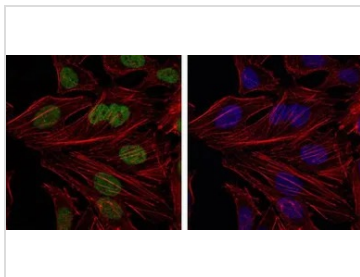
### Note

For laboratory research use only. Not for any clinical, therapeutic, or diagnostic use in humans or animals. Not for animal or human consumption.

Purchasers shall not, and agree not to enable third parties to, analyze, copy, reverse engineer or otherwise attempt to determine the structure or sequence of the product.



For full product information, images and publications, please visit our [website](#).

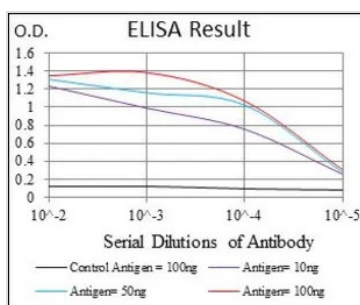
**DATA IMAGES**

**GTX60516 ICC/IF Image**

ICC/IF analysis of HeLa cells using GTX60516 Bmi1 antibody [3E3].

Green : Bmi1

Blue: DRAQ5 fluorescent DNA dye

Red: Actin filaments


**GTX60516 ELISA Image**

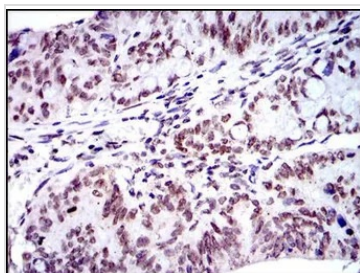
ELISA analysis of antigen using GTX60516 Bmi1 antibody [3E3].

Black : Control antigen 100ng

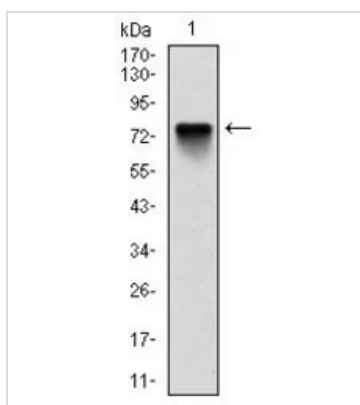
Purple : Antigen 10ng

Blue : Antigen 50ng

Red : Antigen 100ng


**GTX60516 IHC-P Image**

IHC-P analysis of rectum cancer tissue using GTX60516 Bmi1 antibody [3E3].


**GTX60516 WB Image**

WB analysis of human BMI1 (AA: 1-326) recombinant protein using GTX60516 Bmi1 antibody [3E3].



For full product information, images and publications, please visit our [website](http://www.genetex.com).