

Myelin basic protein antibody [2H9]

Cat. No. GTX60519

| | |
|---------------------|-------------------------------|
| Host | Mouse |
| Clonality | Monoclonal |
| Isotype | IgG1 |
| Applications | WB, ICC/IF, IHC-P, FCM, ELISA |
| Reactivity | Human |

Package
100 µl

Applications

Application Note

*Optimal dilutions/concentrations should be determined by the researcher.

| Suggested dilution | Recommended dilution |
|--------------------|----------------------|
| WB | 1/500 - 1/2000 |
| ICC/IF | 1/200 - 1/1000 |
| IHC-P | 1/200 - 1/1000 |
| FCM | 1/200 - 1/400 |
| ELISA | 1/10000 |

Not tested in other applications.

Calculated MW 33 kDa. ([Note](#))

Properties

| | |
|---------------------|--|
| Form | Liquid |
| Buffer | Ascites |
| Preservative | 0.03% Sodium azide |
| Storage | Store as concentrated solution. Centrifuge briefly prior to opening vial. For short-term storage (1-2 weeks), store at 4°C. For long-term storage, aliquot and store at -20°C or below. Avoid multiple freeze-thaw cycles. |
| Immunogen | Purified recombinant fragment of human MBP expressed in E. Coli. |
| Purification | Unpurified |
| Conjugation | Unconjugated |

Note

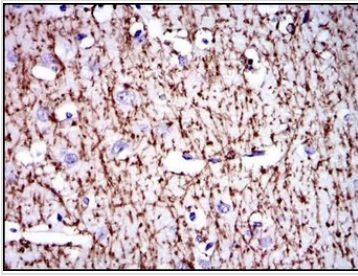
For laboratory research use only. Not for any clinical, therapeutic, or diagnostic use in humans or animals. Not for animal or human consumption.

Purchasers shall not, and agree not to enable third parties to, analyze, copy, reverse engineer or otherwise attempt to determine the structure or sequence of the product.



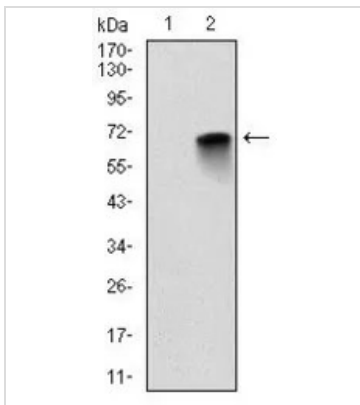
For full product information, images and publications, please visit our [website](#).

DATA IMAGES



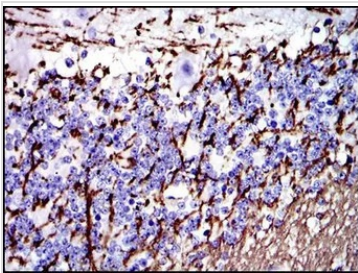
GTX60519 IHC-P Image

IHC-P analysis of human brain tissue using GTX60519 Myelin basic protein antibody [2H9].



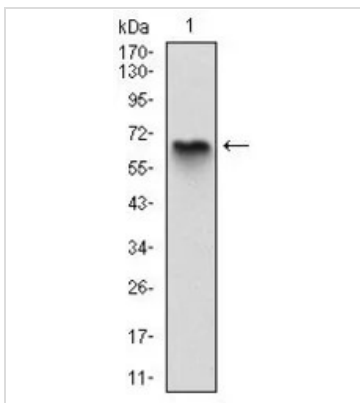
GTX60519 WB Image

WB analysis of HEK293 (1) and MBP-hlgGfc transfected HEK293 (2) cell lysate using GTX60519 Myelin basic protein antibody [2H9].



GTX60519 IHC-P Image

IHC-P analysis of human cerebellum tissue using GTX60519 Myelin basic protein antibody [2H9].



GTX60519 WB Image

WB analysis of human MBP (AA: 1-197) recombinant protein using GTX60519 Myelin basic protein antibody [2H9].



For full product information, images and publications, please visit our [website](https://www.genetex.com).