

CD9 antibody [5G6]

Cat. No. GTX60529

Host	Mouse
Clonality	Monoclonal
Isotype	IgG1
Applications	WB, IHC-P, FCM, ELISA
Reactivity	Human

Package
100 µl

Applications

Application Note

*Optimal dilutions/concentrations should be determined by the researcher.

Suggested dilution	Recommended dilution
WB	1/500 - 1/2000
IHC-P	1/200 - 1/1000
FCM	1/200 - 1/400
ELISA	1/10000

Not tested in other applications.

Calculated MW 25 kDa. ([Note](#))

Properties

Form	Liquid
Buffer	Ascites
Preservative	0.03% Sodium azide
Storage	Store as concentrated solution. Centrifuge briefly prior to opening vial. For short-term storage (1-2 weeks), store at 4°C. For long-term storage, aliquot and store at -20°C or below. Avoid multiple freeze-thaw cycles.
Immunogen	Synthesized peptide of human CD9.
Purification	Unpurified
Conjugation	Unconjugated

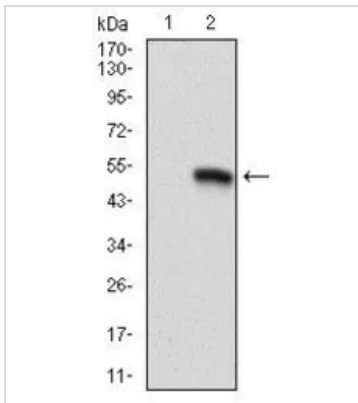
Note

For laboratory research use only. Not for any clinical, therapeutic, or diagnostic use in humans or animals. Not for animal or human consumption.

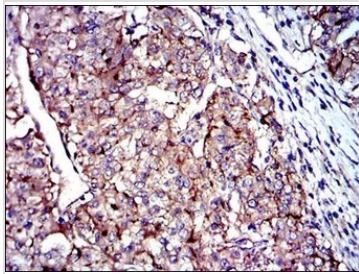
Purchasers shall not, and agree not to enable third parties to, analyze, copy, reverse engineer or otherwise attempt to determine the structure or sequence of the product.



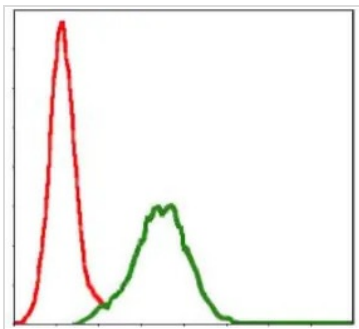
For full product information, images and publications, please visit our [website](#).

DATA IMAGES

GTX60529 WB Image

WB analysis of HEK293 (1) and CD9(AA: 37-228)-hlgGFc transfected HEK293 (2) cell lysate using GTX60529 CD9 antibody [5G6].


GTX60529 IHC-P Image

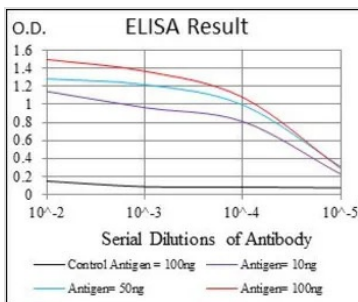
IHC-P analysis of kidney cancer tissue using GTX60529 CD9 antibody [5G6].


GTX60529 FCM Image

FACS analysis of Jurkat cells using GTX60529 CD9 antibody [5G6].

Green : CD9

Red : negative control


GTX60529 ELISA Image

ELISA analysis of antigen using GTX60529 CD9 antibody [5G6].

Black : Control antigen 100ng

Purple : Antigen 10ng

Blue : Antigen 50ng

Red : Antigen 100ng



For full product information, images and publications, please visit our [website](http://www.genetex.com).