

## PPP2R4 antibody [4D9]

**Cat. No. GTX60539**

<b>Host</b>	Mouse
<b>Clonality</b>	Monoclonal
<b>Isotype</b>	IgG1
<b>Applications</b>	WB, ICC/IF, IHC-P, FCM, ELISA
<b>Reactivity</b>	Human

**Package**  
100 µg

## Applications

**Application Note**

\*Optimal dilutions/concentrations should be determined by the researcher.

Suggested dilution	Recommended dilution
WB	1/500 - 1/2000
ICC/IF	1/200 - 1/1000
IHC-P	1/200 - 1/1000
FCM	1/200 - 1/400
ELISA	1/10000

Not tested in other applications.

**Calculated MW** 41 kDa. ([Note](#))

## Properties

<b>Form</b>	Liquid
<b>Buffer</b>	PBS
<b>Preservative</b>	0.05% Sodium azide
<b>Storage</b>	Store as concentrated solution. Centrifuge briefly prior to opening vial. For short-term storage (1-2 weeks), store at 4°C. For long-term storage, aliquot and store at -20°C or below. Avoid multiple freeze-thaw cycles.
<b>Concentration</b>	1 mg/ml (Please refer to the vial label for the specific concentration.)
<b>Immunogen</b>	Purified recombinant fragment of human PPP2R4 expressed in E. Coli.
<b>Purification</b>	Protein G Purified
<b>Conjugation</b>	Unconjugated

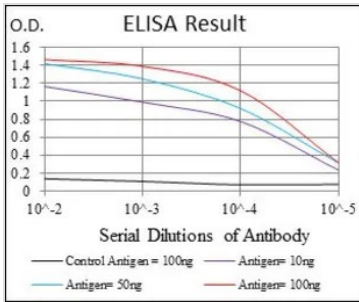


For full product information, images and publications, please visit our [website](#).

For laboratory research use only. Not for any clinical, therapeutic, or diagnostic use in humans or animals. Not for animal or human consumption.

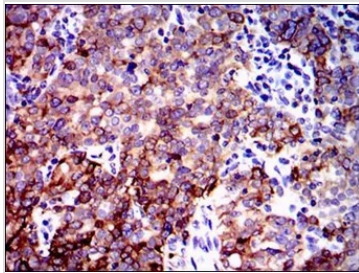
**Note**  
 Purchasers shall not, and agree not to enable third parties to, analyze, copy, reverse engineer or otherwise attempt to determine the structure or sequence of the product.

DATA IMAGES



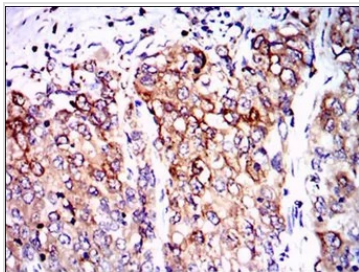
**GTX60539 ELISA Image**

ELISA analysis of antigen using GTX60539 PPP2R4 antibody [4D9].  
 Black : Control antigen 100ng  
 Purple : Antigen 10ng  
 Blue : Antigen 50ng  
 Red : Antigen 100ng



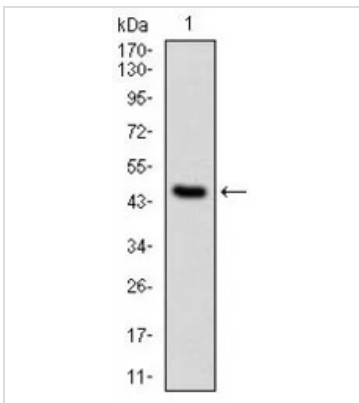
**GTX60539 IHC-P Image**

IHC-P analysis of cervical cancer tissue using GTX60539 PPP2R4 antibody [4D9].



**GTX60539 IHC-P Image**

IHC-P analysis of lung cancer tissue using GTX60539 PPP2R4 antibody [4D9].



**GTX60539 WB Image**

WB analysis of human PPP2R4 (AA: 1-154) recombinant protein using GTX60539 PPP2R4 antibody [4D9].



For full product information, images and publications, please visit our [website](#).