

## NEDD8 antibody [5B8]

Cat. No. GTX60546

Host	Mouse
Clonality	Monoclonal
Isotype	IgG1
Application	WB, ICC/IF, IHC-P, FACS, ELISA
Reactivity	Human, Rat

Package  
100 µg

## APPLICATION

## Application Note

\*Optimal dilutions/concentrations should be determined by the researcher.

Suggested dilution	Recommended dilution
WB	1/500 - 1/2000
ICC/IF	1/200 - 1/1000
IHC-P	1/200 - 1/1000
FACS	1/200 - 1/400
ELISA	1/10000

Not tested in other applications.

Calculated MW 9 kDa. ( [Note](#) )

## PROPERTIES

Form	Liquid
Buffer	PBS
Preservative	0.05% Sodium azide
Storage	Store as concentrated solution. Centrifuge briefly prior to opening vial. For short-term storage (1-2 weeks), store at 4°C. For long-term storage, aliquot and store at -20°C or below. Avoid multiple freeze-thaw cycles.
Concentration	1 mg/ml (Please refer to the vial label for the specific concentration.)
Immunogen	Purified recombinant fragment of human NEDD8 expressed in E. Coli.
Purification	Protein G Purified
Conjugation	Unconjugated

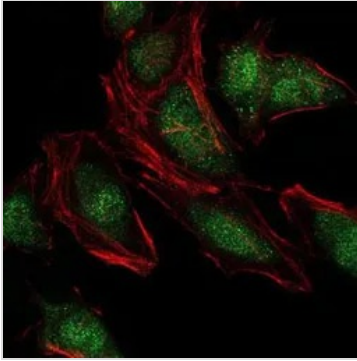
For full product information, images and publications, please visit our [website](#).

For laboratory research use only. Not for any clinical, therapeutic, or diagnostic use in humans or animals. Not for animal or human consumption.

## Note

Purchasers shall not, and agree not to enable third parties to, analyze, copy, reverse engineer or otherwise attempt to determine the structure or sequence of the product.

## DATA IMAGES

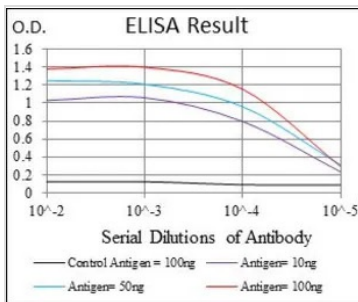


### GTX60546 ICC/IF Image

ICC/IF analysis of HeLa cells using GTX60546 NEDD8 antibody [5B8].

Green : NEDD8

Red: Actin filaments



### GTX60546 ELISA Image

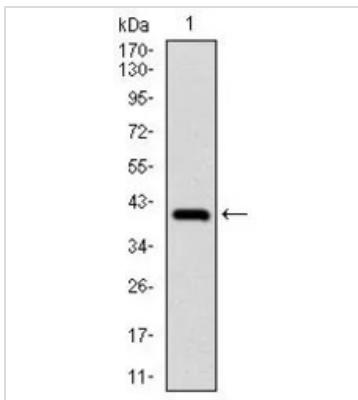
ELISA analysis of antigen using GTX60546 NEDD8 antibody [5B8].

Black : Control antigen 100ng

Purple : Antigen 10ng

Blue : Antigen 50ng

Red : Antigen 100ng



### GTX60546 WB Image

WB analysis of human NEDD8 (AA: 1-81) recombinant protein using GTX60546 NEDD8 antibody [5B8].



For full product information, images and publications, please visit our [website](https://www.genetex.com).