

# COTL1 antibody [5C8]

**Cat. No. GTX60551**

<b>Host</b>	Mouse
<b>Clonality</b>	Monoclonal
<b>Isotype</b>	IgG1
<b>Application</b>	WB, IHC-P, ELISA
<b>Reactivity</b>	Human

**Package**  
100 µg

## APPLICATION

### Application Note

\*Optimal dilutions/concentrations should be determined by the researcher.

Suggested dilution	Recommended dilution
WB	1/500 - 1/2000
IHC-P	1/200 - 1/1000
ELISA	1/10000

Not tested in other applications.

**Calculated MW** 16 kDa. ( [Note](#) )

## PROPERTIES

<b>Form</b>	Liquid
<b>Buffer</b>	PBS
<b>Preservative</b>	0.05% Sodium azide
<b>Storage</b>	Store as concentrated solution. Centrifuge briefly prior to opening vial. For short-term storage (1-2 weeks), store at 4°C. For long-term storage, aliquot and store at -20°C or below. Avoid multiple freeze-thaw cycles.
<b>Concentration</b>	1 mg/ml (Please refer to the vial label for the specific concentration.)
<b>Immunogen</b>	Purified recombinant fragment of human COTL1 expressed in E. Coli.
<b>Purification</b>	Protein G Purified
<b>Conjugation</b>	Unconjugated

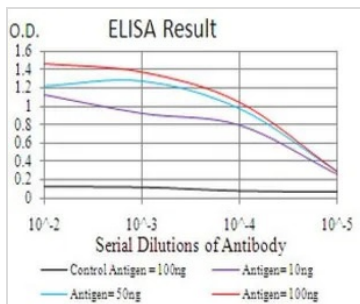
### Note

For laboratory research use only. Not for any clinical, therapeutic, or diagnostic use in humans or animals. Not for animal or human consumption.

Purchasers shall not, and agree not to enable third parties to, analyze, copy, reverse engineer or otherwise attempt to determine the structure or sequence of the product.



For full product information, images and publications, please visit our [website](#).

**DATA IMAGES**

**GTx60551 ELISA Image**

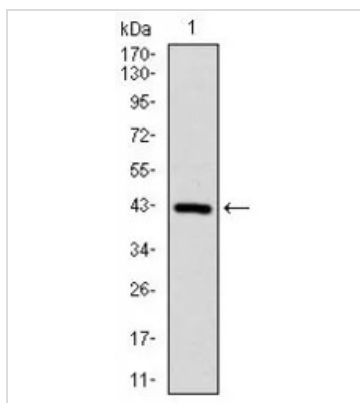
ELISA analysis of antigen using GTx60551 COTL1 antibody [5C8].

Black : Control antigen 100ng

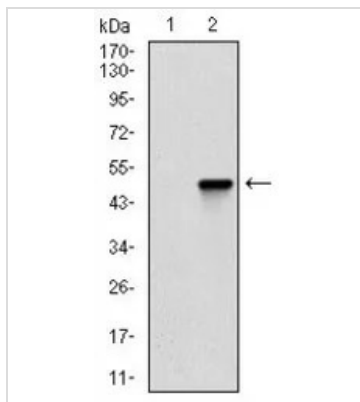
Purple : Antigen 10ng

Blue : Antigen 50ng

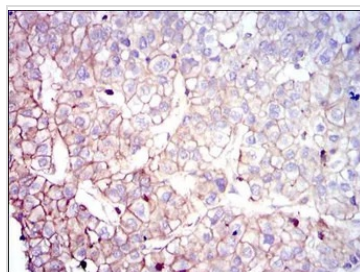
Red : Antigen 100ng


**GTx60551 WB Image**

WB analysis of human COTL1 (AA: 1-142) recombinant protein using GTx60551 COTL1 antibody [5C8].


**GTx60551 WB Image**

WB analysis of HEK293 (1) and COTL1 (AA: 1-142)-hlgGfc transfected HEK293 (2) cell lysate using GTx60551 COTL1 antibody [5C8].


**GTx60551 IHC-P Image**

IHC-P analysis of liver cancer tissue using GTx60551 COTL1 antibody [5C8].



For full product information, images and publications, please visit our [website](https://www.genetex.com).