

YAP1 antibody [1A12]

Cat. No. GTX60554

Host	Mouse
Clonality	Monoclonal
Isotype	IgG1
Applications	WB, IHC-P, FCM, ELISA
Reactivity	Human, Rat, Monkey

References (1)

Package

100 µg

Applications

Application Note

*Optimal dilutions/concentrations should be determined by the researcher.

Suggested dilution	Recommended dilution
WB	1/500 - 1/2000
IHC-P	1/200 - 1/1000
FCM	1/200 - 1/400
ELISA	1/10000

Not tested in other applications.

Calculated MW 54 kDa. ([Note](#))

Properties

Form	Liquid
Buffer	PBS
Preservative	0.05% Sodium azide
Storage	Store as concentrated solution. Centrifuge briefly prior to opening vial. For short-term storage (1-2 weeks), store at 4°C. For long-term storage, aliquot and store at -20°C or below. Avoid multiple freeze-thaw cycles.
Concentration	1 mg/ml (Please refer to the vial label for the specific concentration.)
Immunogen	Purified recombinant fragment of human YAP1 expressed in E. Coli.
Purification	Protein G Purified
Conjugation	Unconjugated

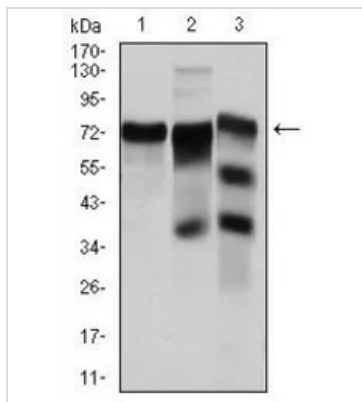
Note

For laboratory research use only. Not for any clinical, therapeutic, or diagnostic use in humans or animals. Not for animal or human consumption.

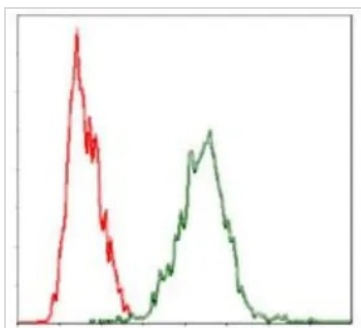
Purchasers shall not, and agree not to enable third parties to, analyze, copy, reverse engineer or otherwise attempt to determine the structure or sequence of the product.

For full product information, images and publications, please visit our [website](#).

DATA IMAGES

**GTX60554 WB Image**

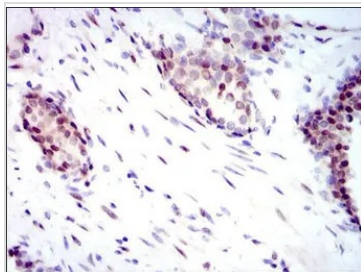
WB analysis of HeLa (1), C6 (2) and Cos7 (3) cell lysate using GTX60554 YAP1 antibody [1A12].

**GTX60554 FCM Image**

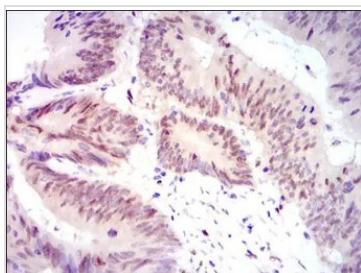
FACS analysis of HeLa cells using GTX60554 YAP1 antibody [1A12].

Green : YAP1

Red : negative control

**GTX60554 IHC-P Image**

IHC-P analysis of prostate cancer tissue using GTX60554 YAP1 antibody [1A12].

**GTX60554 IHC-P Image**

IHC-P analysis of rectum cancer tissue using GTX60554 YAP1 antibody [1A12].



For full product information, images and publications, please visit our [website](#).