

CD30 antibody [3B10]

Cat. No. GTX60555

Host	Mouse
Clonality	Monoclonal
Isotype	IgG1
Applications	WB, FCM, ELISA
Reactivity	Human

Package
100 µl

Applications

Application Note

*Optimal dilutions/concentrations should be determined by the researcher.

Suggested dilution	Recommended dilution
WB	1/500 - 1/2000
FCM	1/200 - 1/400
ELISA	1/10000

Not tested in other applications.

Calculated MW 64 kDa. ([Note](#))

Properties

Form	Liquid
Buffer	Ascites
Preservative	0.03% Sodium azide
Storage	Store as concentrated solution. Centrifuge briefly prior to opening vial. For short-term storage (1-2 weeks), store at 4°C. For long-term storage, aliquot and store at -20°C or below. Avoid multiple freeze-thaw cycles.
Immunogen	Purified recombinant fragment of human CD30 expressed in E. Coli.
Purification	Unpurified
Conjugation	Unconjugated

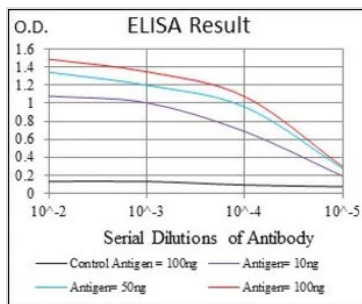
Note For laboratory research use only. Not for any clinical, therapeutic, or diagnostic use in humans or animals. Not for animal or human consumption.

Purchasers shall not, and agree not to enable third parties to, analyze, copy, reverse engineer or otherwise attempt to determine the structure or sequence of the product.



For full product information, images and publications, please visit our [website](#).

DATA IMAGES



GTX60555 ELISA Image

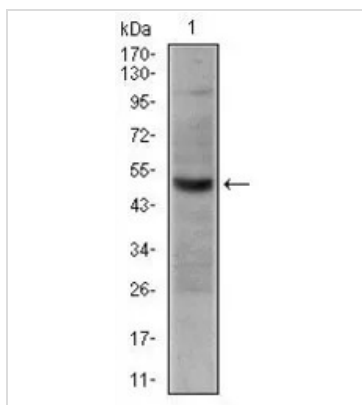
ELISA analysis of antigen using GTX60555 CD30 antibody [3B10].

Black : Control antigen 100ng

Purple : Antigen 10ng

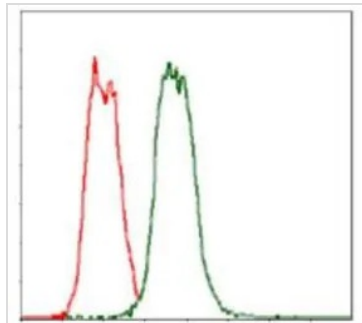
Blue : Antigen 50ng

Red : Antigen 100ng



GTX60555 WB Image

WB analysis of HeLa cell lysate using GTX60555 CD30 antibody [3B10].

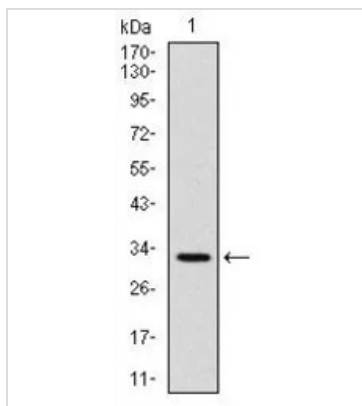


GTX60555 FCM Image

FACS analysis of HeLa cells using GTX60555 CD30 antibody [3B10].

Green : CD30

Red : negative control



GTX60555 WB Image

WB analysis of human CD30 (AA: 536-590) recombinant protein using GTX60555 CD30 antibody [3B10].



For full product information, images and publications, please visit our [website](#).