

Raf1 antibody [4G4]

Cat. No. GTX60556

Host	Mouse
Clonality	Monoclonal
Isotype	IgG1
Applications	WB, IHC-P, FCM, ELISA
Reactivity	Human, Rat, Monkey

Package
100 µg

Applications

Application Note

*Optimal dilutions/concentrations should be determined by the researcher.

Suggested dilution	Recommended dilution
WB	1/500 - 1/2000
IHC-P	1/200 - 1/1000
FCM	1/200 - 1/400
ELISA	1/10000

Not tested in other applications.

Calculated MW 73 kDa. ([Note](#))

Properties

Form	Liquid
Buffer	PBS
Preservative	0.05% Sodium azide
Storage	Store as concentrated solution. Centrifuge briefly prior to opening vial. For short-term storage (1-2 weeks), store at 4°C. For long-term storage, aliquot and store at -20°C or below. Avoid multiple freeze-thaw cycles.
Concentration	1 mg/ml (Please refer to the vial label for the specific concentration.)
Immunogen	Purified recombinant fragment of human RAF1 expressed in E. Coli.
Purification	Protein G Purified
Conjugation	Unconjugated

Note

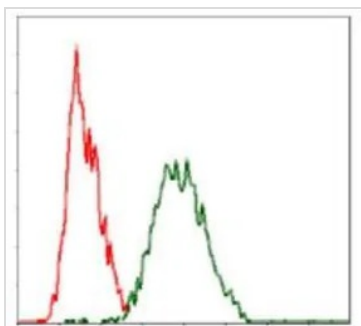
For laboratory research use only. Not for any clinical, therapeutic, or diagnostic use in humans or animals. Not for animal or human consumption.

Purchasers shall not, and agree not to enable third parties to, analyze, copy, reverse engineer or otherwise attempt to determine the structure or sequence of the product.



For full product information, images and publications, please visit our [website](#).

DATA IMAGES

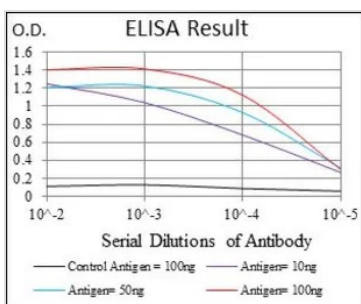


GTX60556 FCM Image

FACS analysis of HeLa cells using GTX60556 Raf1 antibody [4G4].

Green : Raf1

Red : negative control



GTX60556 ELISA Image

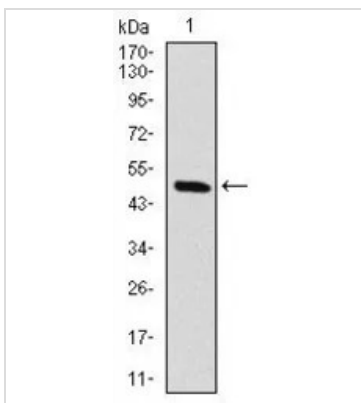
ELISA analysis of antigen using GTX60556 Raf1 antibody [4G4].

Black : Control antigen 100ng

Purple : Antigen 10ng

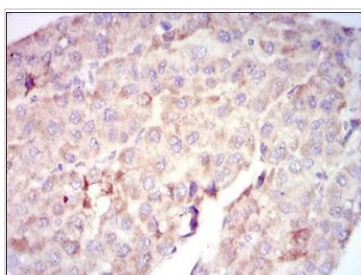
Blue : Antigen 50ng

Red : Antigen 100ng



GTX60556 WB Image

WB analysis of human RAF1 (AA: 198-407) recombinant protein using GTX60556 Raf1 antibody [4G4].



GTX60556 IHC-P Image

IHC-P analysis of liver cancer tissue using GTX60556 Raf1 antibody [4G4].



For full product information, images and publications, please visit our [website](#).