

Integrin beta 1 / CD29 antibody [3B6B2]

Cat. No. GTX60564

Host	Mouse
Clonality	Monoclonal
Isotype	IgG1
Applications	WB, FCM, ELISA
Reactivity	Human

Package
100 µg

Applications

Application Note

*Optimal dilutions/concentrations should be determined by the researcher.

Suggested dilution	Recommended dilution
WB	1/500 - 1/2000
FCM	1/200 - 1/400
ELISA	1/10000

Not tested in other applications.

Calculated MW 88 kDa. ([Note](#))

Properties

Form	Liquid
Buffer	PBS
Preservative	0.05% Sodium azide
Storage	Store as concentrated solution. Centrifuge briefly prior to opening vial. For short-term storage (1-2 weeks), store at 4°C. For long-term storage, aliquot and store at -20°C or below. Avoid multiple freeze-thaw cycles.
Concentration	1 mg/ml (Please refer to the vial label for the specific concentration.)
Immunogen	Purified recombinant fragment of human ITGB1 expressed in E. Coli.
Purification	Protein G Purified
Conjugation	Unconjugated

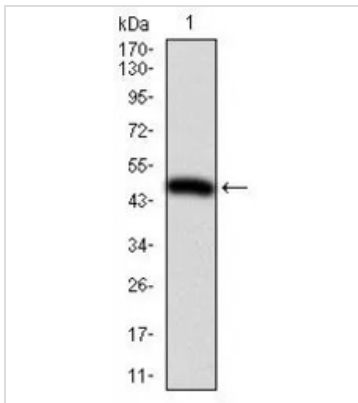
Note

For laboratory research use only. Not for any clinical, therapeutic, or diagnostic use in humans or animals. Not for animal or human consumption.

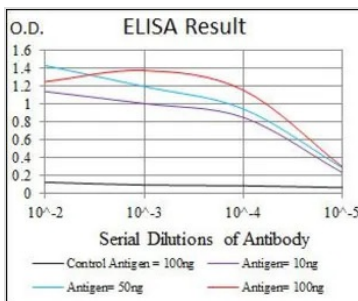
Purchasers shall not, and agree not to enable third parties to, analyze, copy, reverse engineer or otherwise attempt to determine the structure or sequence of the product.



For full product information, images and publications, please visit our [website](#).

DATA IMAGES

GTX60564 WB Image

WB analysis of human ITGB1 (AA: 50-270) recombinant protein using GTX60564 Integrin beta 1 / CD29 antibody [3B6B2].


GTX60564 ELISA Image

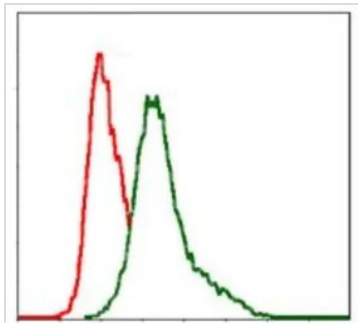
ELISA analysis of antigen using GTX60564 Integrin beta 1 / CD29 antibody [3B6B2].

Black : Control antigen 100ng

Purple : Antigen 10ng

Blue : Antigen 50ng

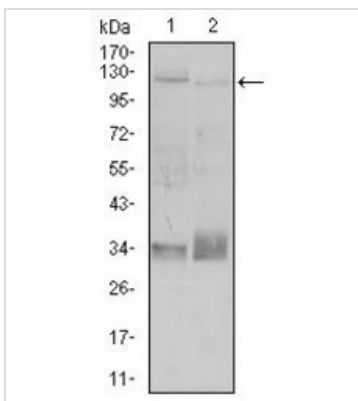
Red : Antigen 100ng


GTX60564 FCM Image

FACS analysis of MCF-7 cells using GTX60564 Integrin beta 1 / CD29 antibody [3B6B2].

Green : Integrin beta 1 / CD29

Red : negative control


GTX60564 WB Image

WB analysis of A549 (1), and Jurkat (2) cell lysate using GTX60564 Integrin beta 1 / CD29 antibody [3B6B2].



For full product information, images and publications, please visit our [website](http://www.genetex.com).