

CDK2 antibody [1A6]

Cat. No. GTX60572

Host	Mouse
Clonality	Monoclonal
Isotype	IgG1
Applications	WB, ICC/IF, IHC-P, FCM, ELISA
Reactivity	Human, Mouse

Package
100 µg

Applications

Application Note

*Optimal dilutions/concentrations should be determined by the researcher.

Suggested dilution	Recommended dilution
WB	1/500 - 1/2000
ICC/IF	1/200 - 1/1000
IHC-P	1/200 - 1/1000
FCM	1/200 - 1/400
ELISA	1/10000

Not tested in other applications.

Calculated MW 34 kDa. ([Note](#))

Properties

Form	Liquid
Buffer	PBS
Preservative	0.05% Sodium azide
Storage	Store as concentrated solution. Centrifuge briefly prior to opening vial. For short-term storage (1-2 weeks), store at 4°C. For long-term storage, aliquot and store at -20°C or below. Avoid multiple freeze-thaw cycles.
Concentration	1 mg/ml (Please refer to the vial label for the specific concentration.)
Immunogen	Purified recombinant fragment of human CDK2 expressed in E. Coli.
Purification	Protein G Purified
Conjugation	Unconjugated



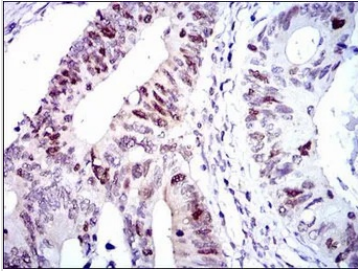
For full product information, images and publications, please visit our [website](#).

For laboratory research use only. Not for any clinical, therapeutic, or diagnostic use in humans or animals. Not for animal or human consumption.

Note

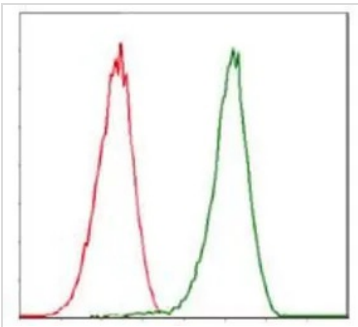
Purchasers shall not, and agree not to enable third parties to, analyze, copy, reverse engineer or otherwise attempt to determine the structure or sequence of the product.

DATA IMAGES



GTx60572 IHC-P Image

IHC-P analysis of colon cancer tissue using GTx60572 CDK2 antibody [1A6].

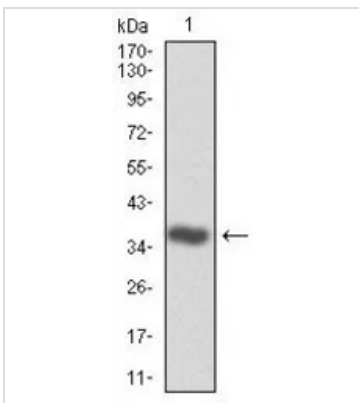


GTx60572 FCM Image

FACS analysis of Jurkat cells using GTx60572 CDK2 antibody [1A6].

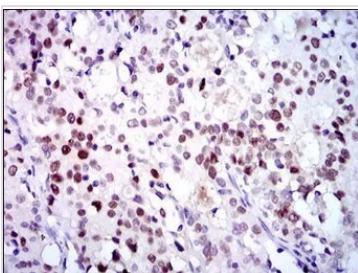
Green : CDK2

Red : negative control



GTx60572 WB Image

WB analysis of human CDK2 (AA: 197-295) recombinant protein using GTx60572 CDK2 antibody [1A6].



GTx60572 IHC-P Image

IHC-P analysis of cervical cancer tissue using GTx60572 CDK2 antibody [1A6].



For full product information, images and publications, please visit our [website](https://www.genetex.com).