

CYP3A4 antibody [3H8]

Cat. No. GTX60577

Host	Mouse
Clonality	Monoclonal
Isotype	IgG1
Application	WB, ICC/IF, IHC-P, IHC-Fr, FACS, ELISA
Reactivity	Human

Reference (6)

Package

100 µg

APPLICATION

Application Note

*Optimal dilutions/concentrations should be determined by the researcher.

Suggested dilution	Recommended dilution
WB	1/500 - 1/2000
ICC/IF	1/200 - 1/1000
IHC-P	1/200 - 1/1000
IHC-Fr	Assay dependent
FACS	1/200 - 1/400
ELISA	1/10000

Not tested in other applications.

Calculated MW 57 kDa. ([Note](#))

PROPERTIES

Form	Liquid
Buffer	PBS
Preservative	0.05% Sodium azide
Storage	Store as concentrated solution. Centrifuge briefly prior to opening vial. For short-term storage (1-2 weeks), store at 4°C. For long-term storage, aliquot and store at -20°C or below. Avoid multiple freeze-thaw cycles.
Concentration	1 mg/ml (Please refer to the vial label for the specific concentration.)
Immunogen	Purified recombinant fragment of human CYP3A4 expressed in E. Coli.
Purification	Protein G Purified
Conjugation	Unconjugated

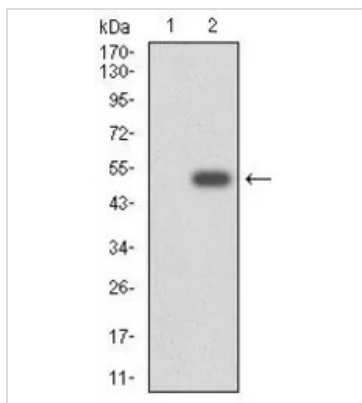


For full product information, images and publications, please visit our [website](#).

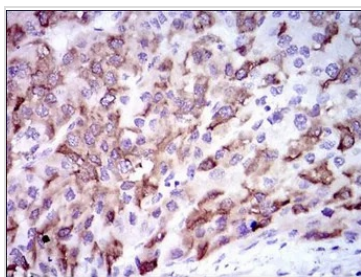
For laboratory research use only. Not for any clinical, therapeutic, or diagnostic use in humans or animals. Not for animal or human consumption.

Note

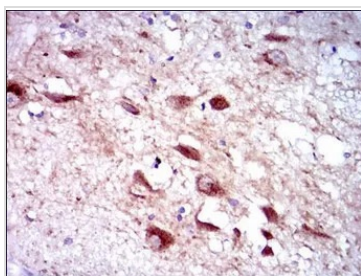
Purchasers shall not, and agree not to enable third parties to, analyze, copy, reverse engineer or otherwise attempt to determine the structure or sequence of the product.

DATA IMAGES

GTX60577 WB Image

WB analysis of HEK293 (1) and CYP3A4 (AA: 243-430)-hlgGfc transfected HEK293 (2) cell lysate using GTX60577 CYP3A4 antibody [3H8].


GTX60577 IHC-P Image

IHC-P analysis of liver cancer tissue using GTX60577 CYP3A4 antibody [3H8].


GTX60577 IHC-P Image

IHC-P analysis of human brain tissue using GTX60577 CYP3A4 antibody [3H8].



For full product information, images and publications, please visit our [website](https://www.genetex.com).