

## HSF4 antibody [2E7]

Cat. No. GTX60581

Host	Mouse
Clonality	Monoclonal
Isotype	IgG1
Applications	WB, FCM, ELISA
Reactivity	Human

Package  
100 µg

## Applications

## Application Note

\*Optimal dilutions/concentrations should be determined by the researcher.

Suggested dilution	Recommended dilution
WB	1/500 - 1/2000
FCM	1/200 - 1/400
ELISA	1/10000

Not tested in other applications.

Calculated MW 53 kDa. ( [Note](#) )

## Properties

Form	Liquid
Buffer	PBS
Preservative	0.05% Sodium azide
Storage	Store as concentrated solution. Centrifuge briefly prior to opening vial. For short-term storage (1-2 weeks), store at 4°C. For long-term storage, aliquot and store at -20°C or below. Avoid multiple freeze-thaw cycles.
Concentration	1 mg/ml (Please refer to the vial label for the specific concentration.)
Immunogen	Purified recombinant fragment of human HSF4 expressed in E. Coli.
Purification	Protein G Purified
Conjugation	Unconjugated

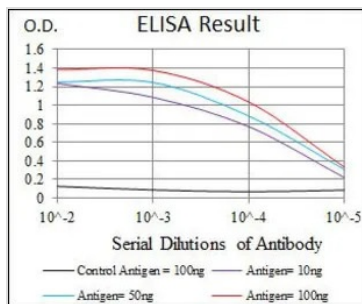
## Note

For laboratory research use only. Not for any clinical, therapeutic, or diagnostic use in humans or animals. Not for animal or human consumption.

Purchasers shall not, and agree not to enable third parties to, analyze, copy, reverse engineer or otherwise attempt to determine the structure or sequence of the product.



For full product information, images and publications, please visit our [website](#).

**DATA IMAGES**

**GTX60581 ELISA Image**

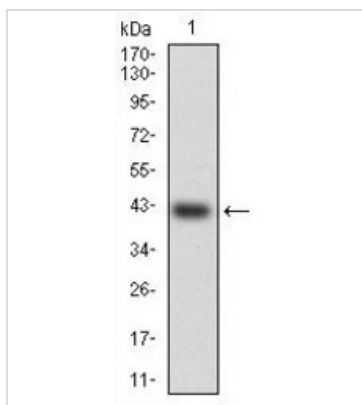
ELISA analysis of antigen using GTX60581 HSF4 antibody [2E7].

Black : Control antigen 100ng

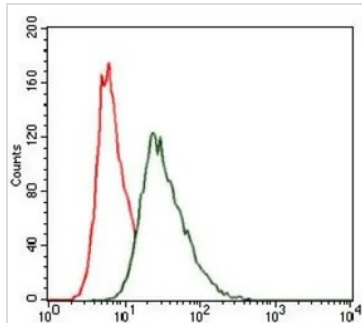
Purple : Antigen 10ng

Blue : Antigen 50ng

Red : Antigen 100ng


**GTX60581 WB Image**

WB analysis of human HSF4 (AA: 245-411) recombinant protein using GTX60581 HSF4 antibody [2E7].


**GTX60581 FCM Image**

FACS analysis of HeLa cells using GTX60581 HSF4 antibody [2E7].

Green : HSF4

Red : negative control



For full product information, images and publications, please visit our [website](http://www.genetex.com).