

## MCP1 / CCL2 antibody [2D8]

**Cat. No. GTX60582**

<b>Host</b>	Mouse
<b>Clonality</b>	Monoclonal
<b>Isotype</b>	IgG1
<b>Applications</b>	WB, ICC/IF, IHC-P, IHC-Fr, FCM, ELISA
<b>Reactivity</b>	Human, Mouse, Rat, Monkey

References ( 7 )

Package

100 µg

## Applications

**Application Note**

\*Optimal dilutions/concentrations should be determined by the researcher.

Suggested dilution	Recommended dilution
WB	1/500 - 1/2000
ICC/IF	1/200 - 1/1000
IHC-P	1/200 - 1/1000
IHC-Fr	Assay dependent
FCM	1/200 - 1/400
ELISA	1/10000

Not tested in other applications.

**Calculated MW** 11 kDa. ( [Note](#) )

## Properties

<b>Form</b>	Liquid
<b>Buffer</b>	PBS
<b>Preservative</b>	0.05% Sodium azide
<b>Storage</b>	Store as concentrated solution. Centrifuge briefly prior to opening vial. For short-term storage (1-2 weeks), store at 4°C. For long-term storage, aliquot and store at -20°C or below. Avoid multiple freeze-thaw cycles.
<b>Concentration</b>	1 mg/ml (Please refer to the vial label for the specific concentration.)
<b>Immunogen</b>	Purified recombinant fragment of human CCL2 expressed in E. Coli.
<b>Purification</b>	Protein G Purified
<b>Conjugation</b>	Unconjugated



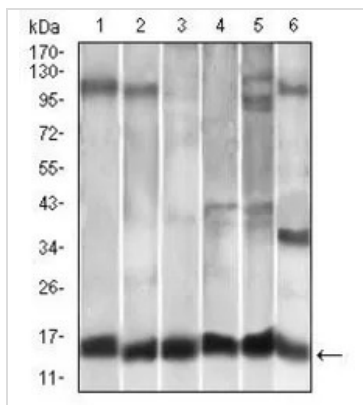
For full product information, images and publications, please visit our [website](#).

For laboratory research use only. Not for any clinical, therapeutic, or diagnostic use in humans or animals. Not for animal or human consumption.

**Note**

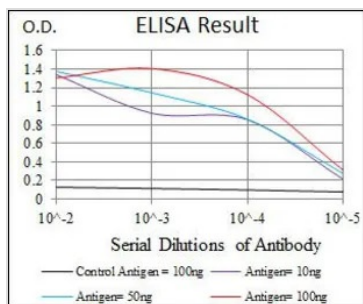
Purchasers shall not, and agree not to enable third parties to, analyze, copy, reverse engineer or otherwise attempt to determine the structure or sequence of the product.

DATA IMAGES



**GTX60582 WB Image**

WB analysis of A549 (1), HeLa (2), Raw264.7 (3), L1210 (4), C6 (5), and COS-7 (6) using GTX60582 MCP1 / CCL2 antibody [2D8].



**GTX60582 ELISA Image**

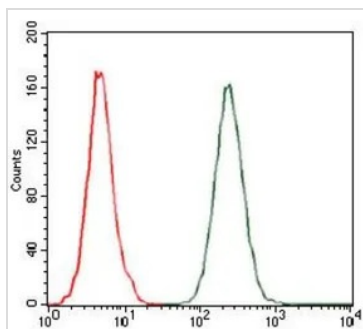
ELISA analysis of antigen using GTX60582 MCP1 / CCL2 antibody [2D8].

Black : Control antigen 100ng

Purple : Antigen 10ng

Blue : Antigen 50ng

Red : Antigen 100ng



**GTX60582 FCM Image**

FACS analysis of A549 cells using GTX60582 MCP1 / CCL2 antibody [2D8].

Green : MCP1 / CCL2

Red : negative control



For full product information, images and publications, please visit our [website](#).