

LC3B antibody [5H12]

Cat. No. GTX60594

| | |
|--------------|----------------|
| Host | Mouse |
| Clonality | Monoclonal |
| Isotype | IgG1 |
| Applications | WB, FCM, ELISA |
| Reactivity | Human |

Package
100 µl

Applications

Application Note

*Optimal dilutions/concentrations should be determined by the researcher.

| Suggested dilution | Recommended dilution |
|--------------------|----------------------|
| WB | 1/500 - 1/2000 |
| FCM | 1/200 - 1/400 |
| ELISA | 1/10000 |

Not tested in other applications.

Calculated MW 15 kDa. ([Note](#))

Properties

| | |
|--------------|--|
| Form | Liquid |
| Buffer | Ascites |
| Preservative | 0.03% Sodium azide |
| Storage | Store as concentrated solution. Centrifuge briefly prior to opening vial. For short-term storage (1-2 weeks), store at 4°C. For long-term storage, aliquot and store at -20°C or below. Avoid multiple freeze-thaw cycles. |
| Immunogen | Purified recombinant fragment of human MAP1LC3B expressed in E. Coli. |
| Purification | Unpurified |
| Conjugation | Unconjugated |

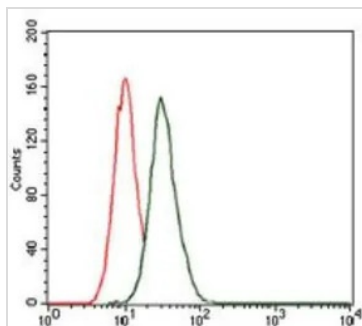
Note

For laboratory research use only. Not for any clinical, therapeutic, or diagnostic use in humans or animals. Not for animal or human consumption.

Purchasers shall not, and agree not to enable third parties to, analyze, copy, reverse engineer or otherwise attempt to determine the structure or sequence of the product.



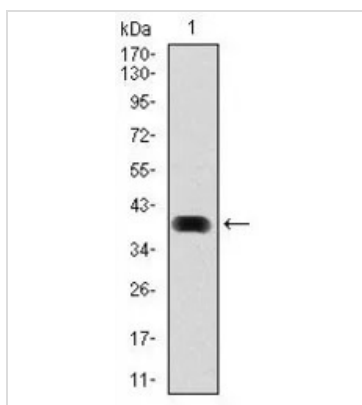
For full product information, images and publications, please visit our [website](#).

DATA IMAGES

GTX60594 FCM Image

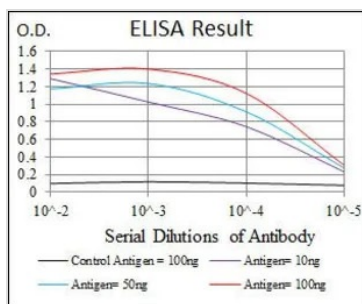
FACS analysis of HeLa cells using GTX60594 LC3B antibody [5H12].

Green : LC3B

Red : negative control


GTX60594 WB Image

WB analysis of human LC3B (AA: 1-125) recombinant protein using GTX60594 LC3B antibody [5H12].


GTX60594 ELISA Image

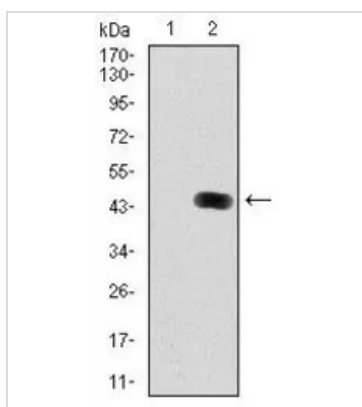
ELISA analysis of antigen using GTX60594 LC3B antibody [5H12].

Black : Control antigen 100ng

Purple : Antigen 10ng

Blue : Antigen 50ng

Red : Antigen 100ng


GTX60594 WB Image

WB analysis of HEK293 (1) and LC3B (AA: 1-125)-hlgGfc transfected HEK293 (2) cell lysate using GTX60594 LC3B antibody [5H12].



For full product information, images and publications, please visit our [website](http://www.genetex.com).