

Nkx2.2 antibody [3E4]

Cat. No. GTX60598

Host	Mouse
Clonality	Monoclonal
Isotype	IgG1
Applications	WB, FCM, ELISA
Reactivity	Human

Package
100 µg

Applications

Application Note

*Optimal dilutions/concentrations should be determined by the researcher.

Suggested dilution	Recommended dilution
WB	1/500 - 1/2000
FCM	1/200 - 1/400
ELISA	1/10000

Not tested in other applications.

Calculated MW 30 kDa. ([Note](#))

Properties

Form	Liquid
Buffer	PBS
Preservative	0.05% Sodium azide
Storage	Store as concentrated solution. Centrifuge briefly prior to opening vial. For short-term storage (1-2 weeks), store at 4°C. For long-term storage, aliquot and store at -20°C or below. Avoid multiple freeze-thaw cycles.
Concentration	1 mg/ml (Please refer to the vial label for the specific concentration.)
Immunogen	Purified recombinant fragment of human NKX2.2 expressed in E. Coli.
Purification	Protein G Purified
Conjugation	Unconjugated

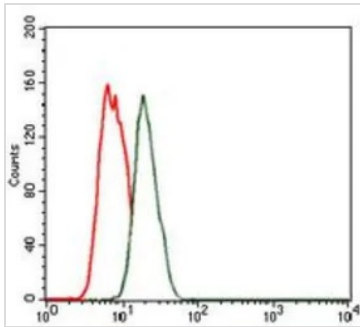
Note

For laboratory research use only. Not for any clinical, therapeutic, or diagnostic use in humans or animals. Not for animal or human consumption.

Purchasers shall not, and agree not to enable third parties to, analyze, copy, reverse engineer or otherwise attempt to determine the structure or sequence of the product.



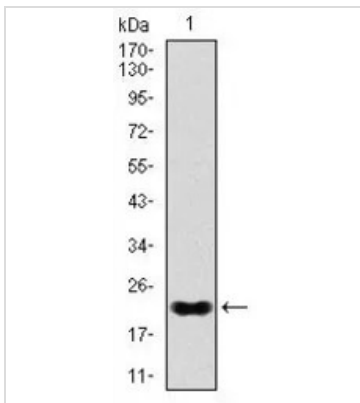
For full product information, images and publications, please visit our [website](#).

DATA IMAGES

GTx60598 FCM Image

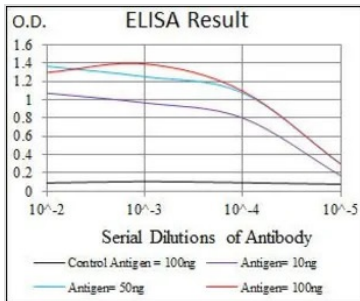
FACS analysis of MCF-7 cells using GTx60598 Nkx2.2 antibody [3E4].

Green : Nkx2.2

Red : negative control


GTx60598 WB Image

WB analysis of human NKX2.2 recombinant protein using GTx60598 Nkx2.2 antibody [3E4].


GTx60598 ELISA Image

ELISA analysis of antigen using GTx60598 Nkx2.2 antibody [3E4].

Black : Control antigen 100ng

Purple : Antigen 10ng

Blue : Antigen 50ng

Red : Antigen 100ng



For full product information, images and publications, please visit our [website](http://www.genetex.com).