

Glypican-3 antibody [9C2]

Cat. No. GTX60603

Host	Mouse
Clonality	Monoclonal
Isotype	IgG1
Applications	WB, ICC/IF, IHC-P, FCM, ELISA
Reactivity	Human, Mouse, Rat

Package
100 µg

Applications

Application Note

*Optimal dilutions/concentrations should be determined by the researcher.

Suggested dilution	Recommended dilution
WB	1/500 - 1/2000
ICC/IF	1/200 - 1/1000
IHC-P	1/200 - 1/1000
FCM	1/200 - 1/400
ELISA	1/10000

Not tested in other applications.

Calculated MW 66 kDa. ([Note](#))

Properties

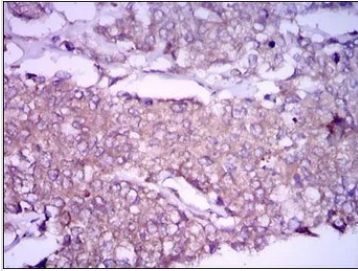
Form	Liquid
Buffer	PBS
Preservative	0.05% Sodium azide
Storage	Store as concentrated solution. Centrifuge briefly prior to opening vial. For short-term storage (1-2 weeks), store at 4°C. For long-term storage, aliquot and store at -20°C or below. Avoid multiple freeze-thaw cycles.
Concentration	1 mg/ml (Please refer to the vial label for the specific concentration.)
Immunogen	Purified recombinant fragment of human GPC3 expressed in E. Coli.
Purification	Protein G Purified
Conjugation	Unconjugated

For full product information, images and publications, please visit our [website](#).

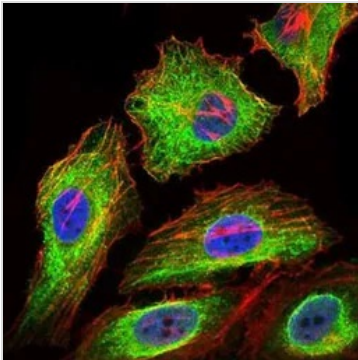
For laboratory research use only. Not for any clinical, therapeutic, or diagnostic use in humans or animals. Not for animal or human consumption.

Note

Purchasers shall not, and agree not to enable third parties to, analyze, copy, reverse engineer or otherwise attempt to determine the structure or sequence of the product.

DATA IMAGES

GTX60603 IHC-P Image

IHC-P analysis of breast cancer tissue using GTX60603 Glypican-3 antibody [9C2].

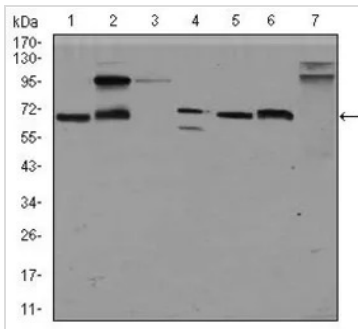

GTX60603 ICC/IF Image

ICC/IF analysis of HeLa cells using GTX60603 Glypican-3 antibody [9C2].

Green : Glypican-3

Blue: DRAQ5 fluorescent DNA dye

Red: Actin filaments


GTX60603 WB Image

WB analysis of HepG2 (1), HEK293 (2), Jurkat (3), SK-N-SH (4), PC-12 (5), F9 (6) and Mouse liver (7) cell lysate using GTX60603 Glypican-3 antibody [9C2].



For full product information, images and publications, please visit our [website](https://www.genetex.com).