

Cytokeratin 13 antibody [3G4]

Cat. No. GTX60622

Host	Mouse
Clonality	Monoclonal
Isotype	IgG1
Application	WB, FACS, ELISA
Reactivity	Human

Package
100 µg

APPLICATION

Application Note

*Optimal dilutions/concentrations should be determined by the researcher.

Suggested dilution	Recommended dilution
WB	1/500 - 1/2000
FACS	1/200 - 1/400
ELISA	1/10000

Not tested in other applications.

Calculated MW 50 kDa. ([Note](#))

PROPERTIES

Form	Liquid
Buffer	PBS
Preservative	0.05% Sodium azide
Storage	Store as concentrated solution. Centrifuge briefly prior to opening vial. For short-term storage (1-2 weeks), store at 4°C. For long-term storage, aliquot and store at -20°C or below. Avoid multiple freeze-thaw cycles.
Concentration	1 mg/ml (Please refer to the vial label for the specific concentration.)
Immunogen	Purified recombinant fragment of human Cytokeratin 13 (AA: 143-295) expressed in E. Coli.
Purification	Protein G Purified
Conjugation	Unconjugated

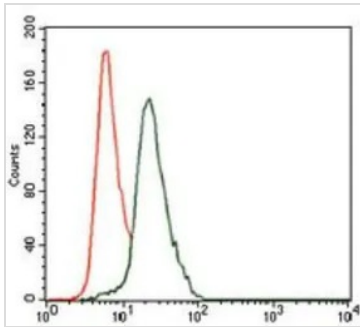
Note

For laboratory research use only. Not for any clinical, therapeutic, or diagnostic use in humans or animals. Not for animal or human consumption.

Purchasers shall not, and agree not to enable third parties to, analyze, copy, reverse engineer or otherwise attempt to determine the structure or sequence of the product.



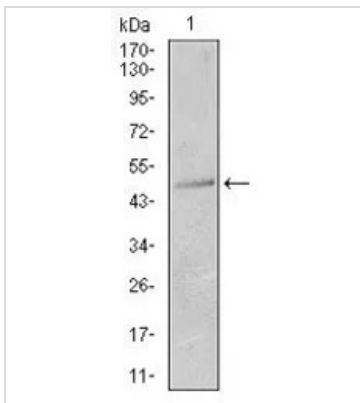
For full product information, images and publications, please visit our [website](#).

DATA IMAGES

GTX60622 FACS Image

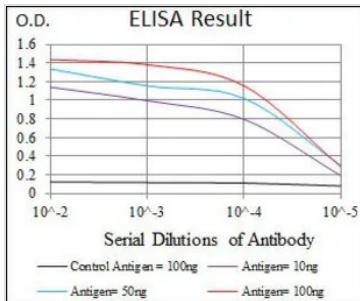
FACS analysis of HeLa cells using GTX60622 Cytokeratin 13 antibody [3G4].

Green : Cytokeratin 13

Red : negative control


GTX60622 WB Image

WB analysis of T47D cell lysate using GTX60622 Cytokeratin 13 antibody [3G4].


GTX60622 ELISA Image

ELISA analysis of antigen using GTX60622 Cytokeratin 13 antibody [3G4].

Black : Control antigen 100ng

Purple : Antigen 10ng

Blue : Antigen 50ng

Red : Antigen 100ng



For full product information, images and publications, please visit our [website](https://www.genetex.com).