

# GCNF antibody [4G8]

**Cat. No. GTX60623**

<b>Host</b>	Mouse
<b>Clonality</b>	Monoclonal
<b>Isotype</b>	IgG1
<b>Application</b>	WB, ICC/IF, IHC-P, FACS, ELISA
<b>Reactivity</b>	Human

**Package**  
100 µg

## APPLICATION

### Application Note

\*Optimal dilutions/concentrations should be determined by the researcher.

Suggested dilution	Recommended dilution
WB	1/500 - 1/2000
ICC/IF	1/400
IHC-P	1/200 - 1/1000
FACS	1/200 - 1/400
ELISA	1/10000

Not tested in other applications.

**Calculated MW** 54 kDa. ( [Note](#) )

## PROPERTIES

<b>Form</b>	Liquid
<b>Buffer</b>	PBS
<b>Preservative</b>	0.05% Sodium azide
<b>Storage</b>	Store as concentrated solution. Centrifuge briefly prior to opening vial. For short-term storage (1-2 weeks), store at 4°C. For long-term storage, aliquot and store at -20°C or below. Avoid multiple freeze-thaw cycles.
<b>Concentration</b>	1 mg/ml (Please refer to the vial label for the specific concentration.)
<b>Immunogen</b>	Purified recombinant fragment of human GCNF (AA: 65-118) expressed in E. Coli.
<b>Purification</b>	Protein G Purified
<b>Conjugation</b>	Unconjugated

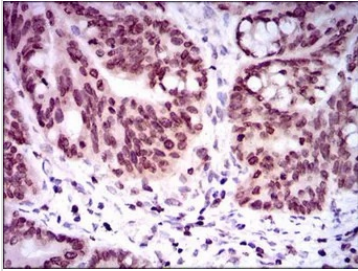


For full product information, images and publications, please visit our [website](#).

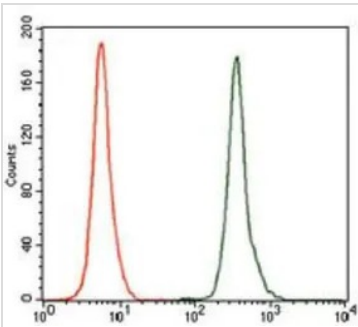
For laboratory research use only. Not for any clinical, therapeutic, or diagnostic use in humans or animals. Not for animal or human consumption.

**Note**

Purchasers shall not, and agree not to enable third parties to, analyze, copy, reverse engineer or otherwise attempt to determine the structure or sequence of the product.

**DATA IMAGES**

**GTX60623 IHC-P Image**

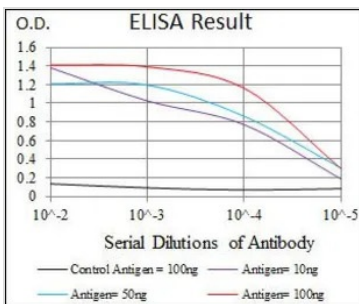
IHC-P analysis of rectum cancer tissue using GTX60623 GCNF antibody [4G8].


**GTX60623 FACS Image**

FACS analysis of K562 cells using GTX60623 GCNF antibody [4G8].

Green : GCNF

Red : negative control


**GTX60623 ELISA Image**

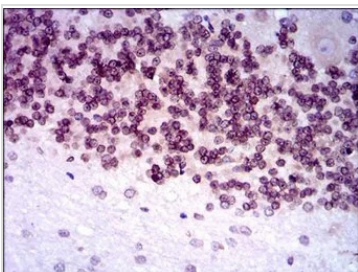
ELISA analysis of antigen using GTX60623 GCNF antibody [4G8].

Black : Control antigen 100ng

Purple : Antigen 10ng

Blue : Antigen 50ng

Red : Antigen 100ng


**GTX60623 IHC-P Image**

IHC-P analysis of human cerebellum tissue using GTX60623 GCNF antibody [4G8].



For full product information, images and publications, please visit our [website](https://www.genetex.com).