

PLK1 antibody [1D1]

Cat. No. GTX60624

Host	Mouse
Clonality	Monoclonal
Isotype	IgG1
Application	WB, ICC/IF, ELISA
Reactivity	Human

Package
100 µg

APPLICATION

Application Note

*Optimal dilutions/concentrations should be determined by the researcher.

Suggested dilution	Recommended dilution
WB	1/500 - 1/2000
ICC/IF	1/50
ELISA	1/10000

Not tested in other applications.

Calculated MW 68 kDa. ([Note](#))

PROPERTIES

Form	Liquid
Buffer	PBS
Preservative	0.05% Sodium azide
Storage	Store as concentrated solution. Centrifuge briefly prior to opening vial. For short-term storage (1-2 weeks), store at 4°C. For long-term storage, aliquot and store at -20°C or below. Avoid multiple freeze-thaw cycles.
Concentration	1 mg/ml (Please refer to the vial label for the specific concentration.)
Immunogen	Purified recombinant fragment of human PLK1 (AA: 331-508) expressed in E. Coli.
Purification	Protein G Purified
Conjugation	Unconjugated

Note

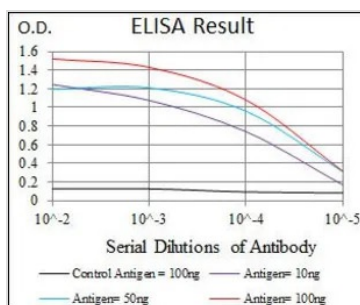
For laboratory research use only. Not for any clinical, therapeutic, or diagnostic use in humans or animals. Not for animal or human consumption.

Purchasers shall not, and agree not to enable third parties to, analyze, copy, reverse engineer or otherwise attempt to determine the structure or sequence of the product.



For full product information, images and publications, please visit our [website](#).

DATA IMAGES



GTX60624 ELISA Image

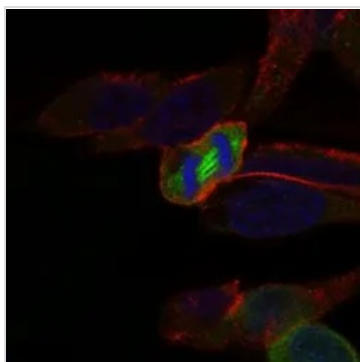
ELISA analysis of antigen using GTX60624 PLK1 antibody [1D1].

Black : Control antigen 100ng

Purple : Antigen 10ng

Blue : Antigen 50ng

Red : Antigen 100ng



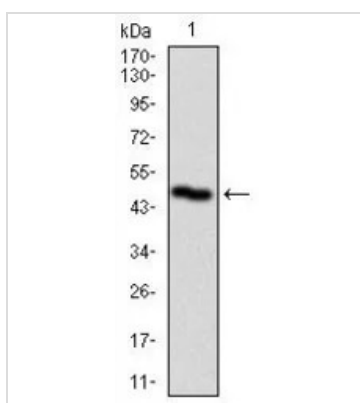
GTX60624 ICC/IF Image

ICC/IF analysis of HeLa cells using GTX60624 PLK1 antibody [1D1].

Green : PLK1

Blue: DRAQ5 fluorescent DNA dye

Red: Actin filaments



GTX60624 WB Image

WB analysis of human PLK1 recombinant protein using GTX60624 PLK1 antibody [1D1].



For full product information, images and publications, please visit our [website](https://www.genetex.com).