

PLK1 antibody [3C11]

Cat. No. GTX60627

Host	Mouse
Clonality	Monoclonal
Isotype	IgG1
Application	WB, IHC-P, FACS, ELISA
Reactivity	Human, Mouse

Package
100 µg

APPLICATION

Application Note

*Optimal dilutions/concentrations should be determined by the researcher.

Suggested dilution	Recommended dilution
WB	1/500 - 1/2000
IHC-P	1/200 - 1/1000
FACS	1/200 - 1/400
ELISA	1/10000

Not tested in other applications.

Calculated MW 68 kDa. ([Note](#))

PROPERTIES

Form	Liquid
Buffer	PBS
Preservative	0.05% Sodium azide
Storage	Store as concentrated solution. Centrifuge briefly prior to opening vial. For short-term storage (1-2 weeks), store at 4°C. For long-term storage, aliquot and store at -20°C or below. Avoid multiple freeze-thaw cycles.
Concentration	1 mg/ml (Please refer to the vial label for the specific concentration.)
Immunogen	Purified recombinant fragment of human PLK1 (AA: 331-508) expressed in E. Coli.
Purification	Protein G Purified
Conjugation	Unconjugated

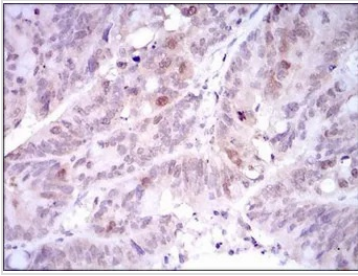
Note

For laboratory research use only. Not for any clinical, therapeutic, or diagnostic use in humans or animals. Not for animal or human consumption.

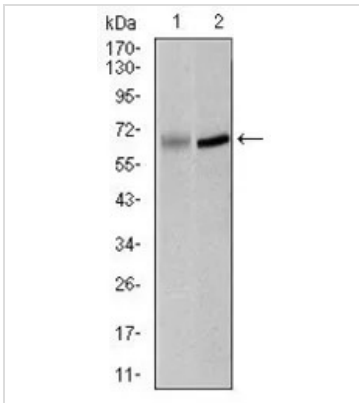
Purchasers shall not, and agree not to enable third parties to, analyze, copy, reverse engineer or otherwise attempt to determine the structure or sequence of the product.



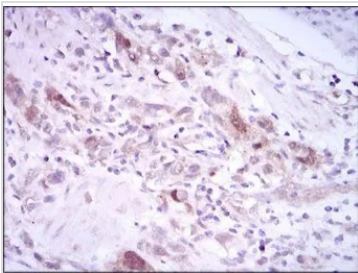
For full product information, images and publications, please visit our [website](#).

DATA IMAGES

GTX60627 IHC-P Image

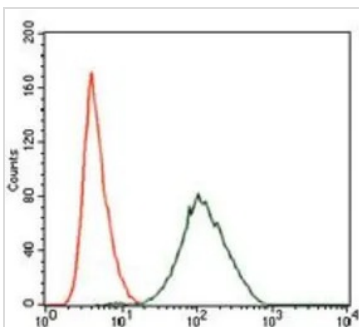
IHC-P analysis of rectum cancer tissue using GTX60627 PLK1 antibody [3C11].


GTX60627 WB Image

WB analysis of K562 (1) and Raji (2) cell lysate using GTX60627 PLK1 antibody [3C11].


GTX60627 IHC-P Image

IHC-P analysis of stomach cancer tissue using GTX60627 PLK1 antibody [3C11].


GTX60627 FACS Image

FACS analysis of NIH3T3 cells using GTX60627 PLK1 antibody [3C11].

Green : PLK1

Red : negative control



For full product information, images and publications, please visit our [website](https://www.genetex.com).