

SPIB antibody [4G5]

Cat. No. GTX60635

Host	Mouse
Clonality	Monoclonal
Isotype	IgG1
Applications	WB, ICC/IF, IHC-P, FCM, ELISA
Reactivity	Human, Mouse

References (1)

Package

100 µl

Applications

Application Note

*Optimal dilutions/concentrations should be determined by the researcher.

Suggested dilution	Recommended dilution
WB	1/500 - 1/2000
ICC/IF	1/200 - 1/1000
IHC-P	1/200 - 1/1000
FCM	1/200 - 1/400
ELISA	1/10000

Not tested in other applications.

Calculated MW 29 kDa. ([Note](#))

Properties

Form	Liquid
Buffer	Ascites
Preservative	0.03% Sodium azide
Storage	Store as concentrated solution. Centrifuge briefly prior to opening vial. For short-term storage (1-2 weeks), store at 4°C. For long-term storage, aliquot and store at -20°C or below. Avoid multiple freeze-thaw cycles.
Immunogen	Purified recombinant fragment of human SPIB (AA: 200-252) expressed in E. Coli.
Purification	Unpurified
Conjugation	Unconjugated

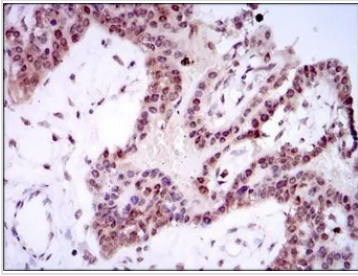
Note

For laboratory research use only. Not for any clinical, therapeutic, or diagnostic use in humans or animals. Not for animal or human consumption.

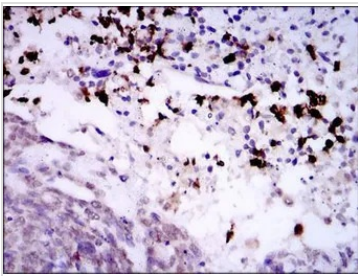
Purchasers shall not, and agree not to enable third parties to, analyze, copy, reverse engineer or otherwise attempt to determine the structure or sequence of the product.



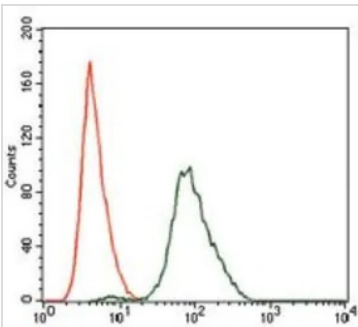
For full product information, images and publications, please visit our [website](#).

DATA IMAGES

GTX60635 IHC-P Image

IHC-P analysis of ovarian cancer tissue using GTX60635 SPIB antibody [4G5].


GTX60635 IHC-P Image

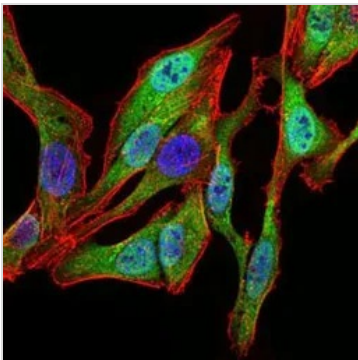
IHC-P analysis of esophageal cancer using GTX60635 SPIB antibody [4G5].


GTX60635 FCM Image

FACS analysis of NIH3T3 cells using GTX60635 SPIB antibody [4G5].

Green : SPIB

Red : negative control


GTX60635 ICC/IF Image

ICC/IF analysis of HeLa cells using GTX60635 SPIB antibody [4G5].

Green : SPIB

Blue: DRAQ5 fluorescent DNA dye

Red: Actin filaments



For full product information, images and publications, please visit our [website](https://www.genetex.com).