

## GLUT4 antibody [3G10A3]

Cat. No. GTX60674

Host	Mouse
Clonality	Monoclonal
Isotype	IgG2b
Applications	WB, ICC/IF, IHC-P, FCM, ELISA
Reactivity	Human, Mouse

References ( 2 )

Package

100 µg

## Applications

## Application Note

\*Optimal dilutions/concentrations should be determined by the researcher.

Suggested dilution	Recommended dilution
WB	1/500 - 1/2000
ICC/IF	1/200 - 1/1000
IHC-P	1/200 - 1/1000
FCM	1/200 - 1/400
ELISA	1/10000

Not tested in other applications.

Calculated MW 55 kDa. ( [Note](#) )

## Properties

Form	Liquid
Buffer	PBS
Preservative	0.05% Sodium azide
Storage	Store as concentrated solution. Centrifuge briefly prior to opening vial. For short-term storage (1-2 weeks), store at 4°C. For long-term storage, aliquot and store at -20°C or below. Avoid multiple freeze-thaw cycles.
Concentration	1 mg/ml (Please refer to the vial label for the specific concentration.)
Immunogen	Purified recombinant fragment of human GLUT4 (AA: 224-353 ) expressed in E. Coli.
Purification	Protein G Purified
Conjugation	Unconjugated



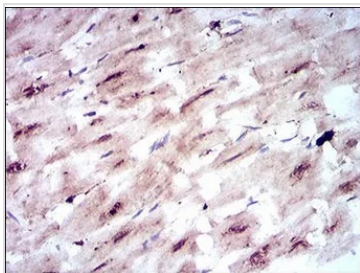
For full product information, images and publications, please visit our [website](#).

For laboratory research use only. Not for any clinical, therapeutic, or diagnostic use in humans or animals. Not for animal or human consumption.

## Note

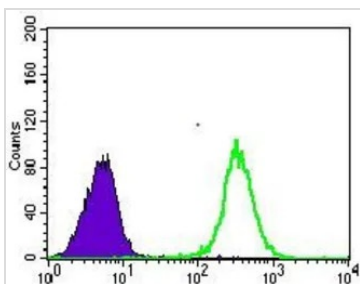
Purchasers shall not, and agree not to enable third parties to, analyze, copy, reverse engineer or otherwise attempt to determine the structure or sequence of the product.

## DATA IMAGES



### GTX60674 IHC-P Image

IHC-P analysis of human cardiac muscle tissue using GTX60674 GLUT4 antibody [3G10A3].

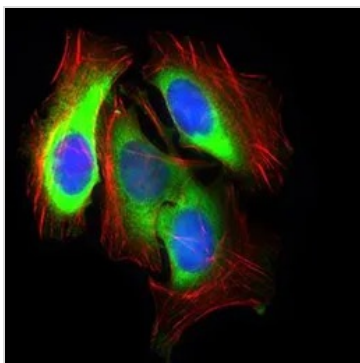


### GTX60674 FCM Image

FACS analysis of HeLa cells using GTX60674 GLUT4 antibody [3G10A3].

Green : GLUT4

Purple : negative control



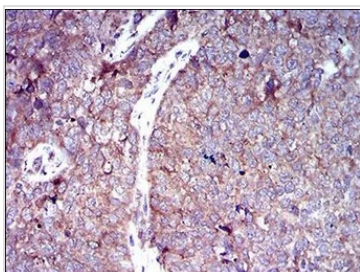
### GTX60674 ICC/IF Image

ICC/IF analysis of HeLa cells using GTX60674 GLUT4 antibody [3G10A3].

Green : GLUT4

Blue: DRAQ5 fluorescent DNA dye

Red: Actin filaments



### GTX60674 IHC-P Image

IHC-P analysis of bladder cancer tissue using GTX60674 GLUT4 antibody [3G10A3].



For full product information, images and publications, please visit our [website](#).