

# BMPR1A antibody [4B7B2]

**Cat. No. GTX60675**

<b>Host</b>	Mouse
<b>Clonality</b>	Monoclonal
<b>Isotype</b>	IgG1
<b>Applications</b>	WB, IHC-P, FCM, ELISA
<b>Reactivity</b>	Human

**Package**  
100 µg

## Applications

### Application Note

\*Optimal dilutions/concentrations should be determined by the researcher.

Suggested dilution	Recommended dilution
WB	1/500 - 1/2000
IHC-P	1/200 - 1/1000
FCM	1/200 - 1/400
ELISA	1/10000

Not tested in other applications.

**Calculated MW** 60 kDa. ( [Note](#) )

## Properties

<b>Form</b>	Liquid
<b>Buffer</b>	PBS
<b>Preservative</b>	0.05% Sodium azide
<b>Storage</b>	Store as concentrated solution. Centrifuge briefly prior to opening vial. For short-term storage (1-2 weeks), store at 4°C. For long-term storage, aliquot and store at -20°C or below. Avoid multiple freeze-thaw cycles.
<b>Concentration</b>	1 mg/ml (Please refer to the vial label for the specific concentration.)
<b>Immunogen</b>	Purified recombinant fragment of human BMPR1A (AA: 179-378 ) expressed in E. Coli.
<b>Purification</b>	Protein G Purified
<b>Conjugation</b>	Unconjugated

### Note

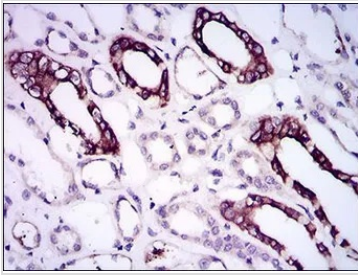
For laboratory research use only. Not for any clinical, therapeutic, or diagnostic use in humans or animals. Not for animal or human consumption.

Purchasers shall not, and agree not to enable third parties to, analyze, copy, reverse engineer or otherwise attempt to determine the structure or sequence of the product.



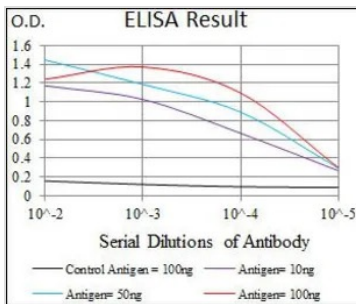
For full product information, images and publications, please visit our [website](#).

DATA IMAGES



**GTX60675 IHC-P Image**

IHC-P analysis of human kidney tissue using GTX60675 BMPR1A antibody [4B7B2].



**GTX60675 ELISA Image**

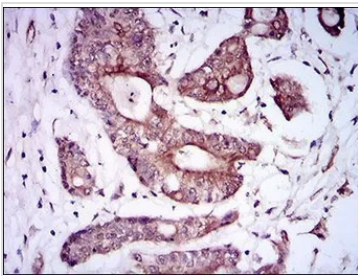
ELISA analysis of antigen using GTX60675 BMPR1A antibody [4B7B2].

Black : Control antigen 100ng

Purple : Antigen 10ng

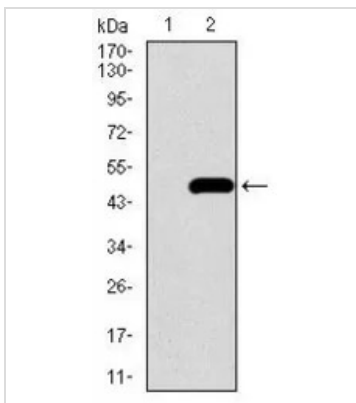
Blue : Antigen 50ng

Red : Antigen 100ng



**GTX60675 IHC-P Image**

IHC-P analysis of colon cancer tissue using GTX60675 BMPR1A antibody [4B7B2].



**GTX60675 WB Image**

WB analysis of HEK293 (1) and BMPR1A (AA: 179-378)-hlgGfC transfected HEK293 (2) cell lysate using GTX60675 BMPR1A antibody [4B7B2].



For full product information, images and publications, please visit our [website](https://www.genetex.com).